

Epoxy grouting

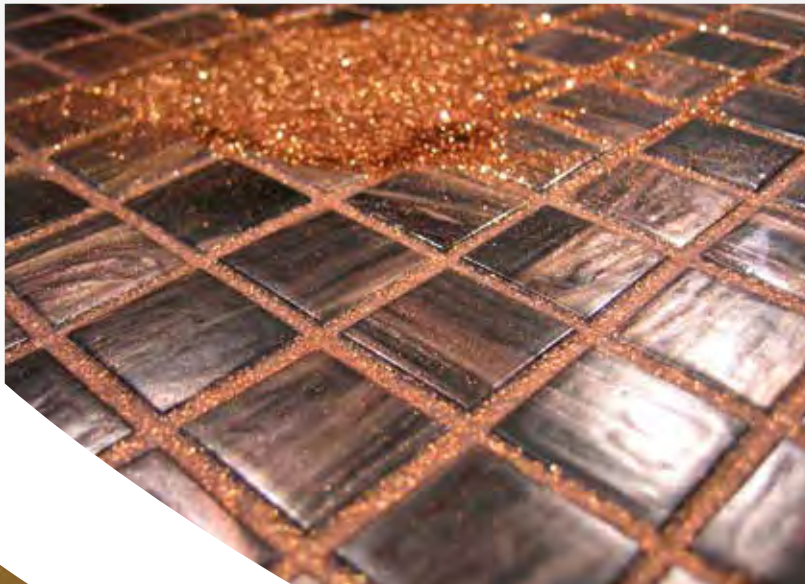


We know the problems

- Colour matching with the tiles
- Variations in colour shading and efflorescence
- Grout lines that become too dirty during daily use
- Formation of mould
- Cracking

And we can solve them

- Vast range of colours
- Highly resistant grouts
- Totally non-absorbent
- Resistant to chemical attack
- Bright colours that are long-lasting
- Adhesion to difficult substrates



alternative products

groutings and sealants



Skycolors*

For grout lines from 2 to 20 mm, **SKYCOLORS** is the highly chemical-resistant epoxy grout, suitable for spas, beauty-farms and beauty centres. It can be also used for swimming pools, private bathrooms, kitchen tops and any surface where maximum hygiene is key. The wide range of particularly shiny and bright colours enhances floor and wall tiling by harmonising the whole space.

SKYCOLORS is compliant with **EN 13888** cat. **RG**. **SKYCOLORS** è conforme alla **EN 13888** cat. **RG**.



Epostuk*

Two-component epoxy grout with high chemical resistance for grout lines from 3 to 15 mm. Ideal for industrial settings.

Compliant with class **RG** in accordance with European standard **EN 13888**.



Skycolors Evolution*

Two-component epoxy grout with delicate and harmonious finishes, for grout lines from 1 to 15 mm. Available in 15 colours. One of five glitters can be added to the product, for a total of 85 different colour shades. For settings of high aesthetic value.

Compliant with class **RG** in accordance with European standard **EN 13888**.



Skycolors Fine

parquet effect

Two-component epoxy grout available in 8 colours designed to match with all the shades of parquet-effect tiles.

It can be used for grout lines from 0 to 3 mm, the most common size used with this type of tile.

Compliant with class **RG** in accordance with European standard **EN 13888**.

The complete COLOUR RANGE of Technokolla grouts can be found in the cover appendix.

Glitter

One 90 g pack for every 3 kg pack of **SKYCOLORS EVOLUTION**.

The combination of colours and glitters may change the initial colour. A preventive test is recommended to evaluate the chromatic effect of the chosen combination.

Mother-of-pearl **GLITTER**

Golden **GLITTER**

Silver **GLITTER**

Bronze **GLITTER**

Fluo **GLITTER** (with fluorescent effect)



* They can also be used as cat. **R2 T** adhesives in accordance with **EN 12004**.

Application steps



1 Pour all the catalyst (component B) into the paste (component A).



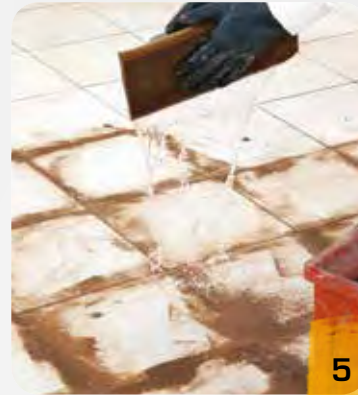
2 Mix the two components with a spatula.



3 Mix the two components with a low-speed drill.



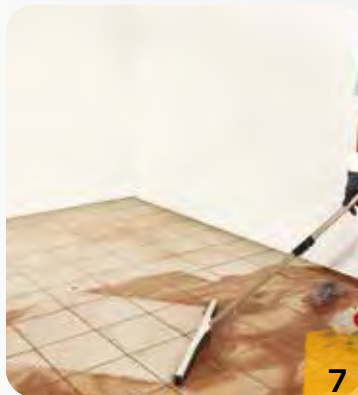
4 Apply the epoxy grout with a rubber trowel.



5 Wet the freshly grouted surface with a good amount of clean water.



6 Level the surface using wet soft felt pad, cleaning it frequently with a good amount of water.



7 Clean the still fresh surface with grout spreader.



8 Complete the cleaning with a damp soft sponge, cleaning it frequently with a good amount of water.

FINAL CLEANING WITH EPOXY-DET



spotlight product

groutings and sealants

Epoxy-det

Cleaner for epoxy grouts such as **EPOSTUK, SKYCOLORS EVOLUTION, SKYCOLORS FINE**. Ideal for removing epoxy grout residues from ceramic and porcelain tile. It enhances and brightens grouting created with **SKYCOLORS EVOLUTION** with the addition of **GLITTERS**.



Epoxy grouting

