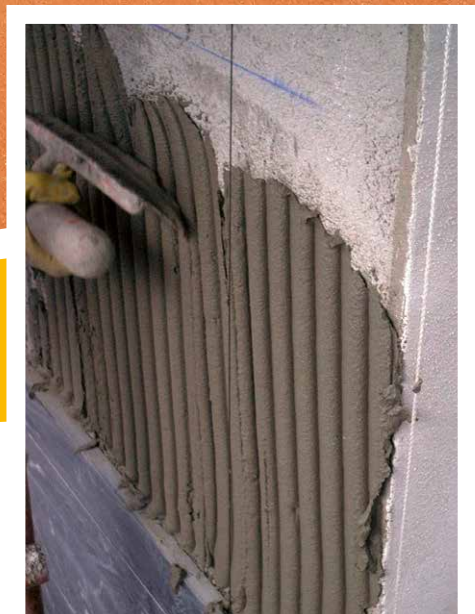


techno-xl

01/25 129



TECHNO-XL

Powder adhesive to be applied in thick layers for fixing extruded cotto and ceramic tiles.

bonding agents and adhesives



A SIKA BRAND



techno-xl



MAIN FEATURES

- Monocomponent
- Frost proof
- Layers up to 15 mm thick
- Optimum workability
- No creep

APPEARANCE

White powder

STORAGE

12 months in dry place

FIELDS OF USE

- Indoor and outdoor fixing ceramic floor and wall tiles, such as: cotto, twice-fired, single-fired ceramic, split tiles and porcelain stoneware in small sizes.
- Spot-glueing of insulating materials such as: polystyrene foam, mineral or glass wool, pressed wood fiber panels.
- For further applications, consult "Warnings and recommendations" use with latex.

SUBSTRATES

Cement-based plaster, cement-lime mortar, gypsum-based plaster¹, anhydrite screeds¹, cement-based screeds, concrete.

¹ after application of PRIMER-T PLUS

NATURE OF THE PRODUCT

TECHNO-XL mainly consists of high-strength cements, selected silicon/quartz mineral charges and specific additives.

For further details, ask the technical office for the safety brief or download it from the web site www.technokolla.com.

OPERATIONS PRIOR TO APPLICATION

Small localized hollows or gravel pockets in the case of concrete can be leveled (not more than 5 mm thick) with TECHNO-XL 24 h prior to fixing. If thicker layers are required, use GAP or before fixing tiles.

HOW TO PREPARE THE MIXTURE

Blend TECHNO-XL with approximately 6.5 l of clean water (25,5±1%). Blend until mixture is homogeneous and lump-free. It is advisable to use blender at low speed (approx. 500 rpm) as high speed will reduce the mechanical characteristics of the product. Wait 5-10 minutes, then stir the product briefly again before applying. The creamy paste obtained can be easily applied by trowel and possesses optimum thixotropy.

bonding agents and adhesives



RECOMMENDED ACCESSORIES



Blender



White rubber mallet



Trowel stainless steel 8 mm square serrations



Trowel stainless steel 10 mm square serrations



Trowel stainless steel Ø 15 mm rounded serrations

WARNINGS AND RECOMMENDATIONS

It is always advisable to apply two coats when laying tile sizes measuring 900 cm² or larger.

Do not use:

- on aerated or precast concrete, plasterboard, old ceramic floors, wood, vinyl flooring, metal,
- for fixing on products from the RASOLASTIK range or on RASOGUM +
- for fixing on facades
- at temperatures less than 5°C or more than 35°C
- in coats more than 15 mm thick
- on porcelain stoneware in large sizes

Use TECHNO-XL with TC-LAX (about 6.75 l per 25 kg bag) class C2 T S1, in the following cases:

- fixing tiles on old floors, also outdoors
- fixing porcelain stoneware in large sizes
- aerated concrete
- fixing on facades
- fixing natural stone and marble, so long as they are not affected by water or liable to stain
- fixing in industrial environments.
- on electrically or water-heated screeds
- tile laying in swimming pools

Use TECHNO-XL with TC-LASTIC (about 7 l per 25 kg bag) class C2 T S2, in the following cases:

- fixing porcelain stoneware in large sizes, indoors and outdoors
- fixing on facades
- fixing natural stone and marble, so long as they are not affected by water or liable to stain
- fixing on products from the RASOLASTIK range or on RASOGUM +
- on electrically or water-heated screeds
- tile laying in swimming pools

CONSUMPTION

Trowel	8x8 mm	10x10 mm	Ø15 mm
Techno-xl	4 kg/m ²	5 kg/m ²	7 kg/m ²

Consumption data refer to sole use of a trowel on flat substrates.

techno-xl

TECHNICAL DATA	VALUE	REQUIREMENT	STANDARD
Curing time	10 min		
Pot life	*6 h		
Open time	*20 min	°20 min	EN 1346
Adjustability time	*Approx. 45 min		
Treadable	*After 24-36 h		
Floor tiles can be grouted	*After 24-36 h		
Wall tiles can be grouted	*After 4-6 h		
Surface can be used	*After 14 days		
Creep on vertical wall	≤ 0.5 mm	°≤ 0.5 mm	EN 1308
Initial tensile strength	~ 1.0 N/mm ²	°≥ 0.5 N/mm ²	EN 1348
Tensile strength after the action of heat	~ 0.5 N/mm ²	°≥ 0.5 N/mm ²	EN 1348
Tensile strength after immersion in water	~ 1.0 N/mm ²	°≥ 0.5 N/mm ²	EN 1348
Bond after freezing/thawing cycles	~ 1.1 N/mm ²	°≥ 0.5 N/mm ²	EN 1348

° according to standard "EN 12004"

* these time intervals refer to a temperature of 23°C-50% R.H.. They become shorter with higher temperatures and longer at lower temperatures.

SPECIFICATION

Ceramic floor and wall tiles must be fixed with class "C1T cement-based powder adhesive according to standard 12004", such as TECHNOKOLLA's TECHNO-XL, which can be applied in layers up to 15 mm thick on cement-based substrates.

Technokolla reminds you to examine the "notes" document that completes the information in this data sheet. The document can be downloaded in the pdf format from the website www.technokolla.com.

The advice about technical matters in the technical data sheets, or given verbally or in writing by our personnel as part of our customer assistance service, is the result of our best and most up to date experience. Since we are unable to personally modify the conditions in the building site or the way the work is carried out, this information is purely indicative and, thus, binds us neither legally nor in any other way in relation third parties. This information does not relieve the end user from being responsible for testing our products so as to make sure they are fit for the required use. We therefore strongly advise the customer/user to subject Technokolla's products to preventive tests in order to ensure that they are suitable. The end user is also responsible for checking to make sure that this technical data sheet is not obsolete and that more recent editions have not replaced it. Thus, before using our products, you are advised to download the most up to date version of the technical data sheet from our web site www.technokolla.com.



A SIKA BRAND

Sika Italia S.p.A.

Registered Office and Administrative Headquarters:

Via L. Einaudi 6, 20068 Peschiera Borromeo (MI)

Sassuolo plant (MO): Via Radici in Piano 558, Postal Code 41049

Ph.: +39 0536 809711

Fax: +39 0536 809729

www.technokolla.com