

- And we know how to solve them
- It is of vital importance to assess the substrate
 - Low modulus adhesives and grouting able to withstand permanent immersion in alkaline environments
 - Waterproofing products that are long-lasting and that are not subjected to ageing.
 - Read the technical data sheets of the materials used so as to check their limits
 - The tile formats must not exceed 500 cm²
 - The joints between the tiles must not be less than 4 mm wide

- We understand the problems
- Permanent immersion in chlorinated water
 - Sudden temperature variations and expanding materials
 - Waterproofing which deteriorates over the years
 - Tiles of an unsuitable size or nature for use in swimming pools
 - Closely laid tiles

Laying swimming pools and wellness centers

Specification

- LEVELLING

Levelling (if necessary) with thixotropic cement-based skimming plaster in layers 2 to 10 mm thick, such as Technokolla's **RASO** or **GAP** in layers 3 to 30 mm thick.

Amount required:

1.6-1.7 kg/m² for every mm of thickness

- WATERPROOFING

Waterproofing coating obtained by using anti-carbonation cement-based two-pack skimming plaster conforming to class **CM OP**, as established by standard **EN 14891** and complying with European standard **EN 1504-2**, class **PI-MC-IR**, such as Technokolla's **RASOLASTIK ADV HD** applied in two coats with a flat trowel for a 3 mm overall thickness, reinforced with **RASOLASTIK-NET** in the first coat and with Technokolla's **BANDELLA RL 120** strips for sealing the corners, edges and expansion joints.

Amount required:

1.8 kg/m² for every mm of thickness

- TILE LAYING

Pool cladding with ceramic tiles in formats of up to 1100 cm², laid with a high-performance two-pack system of the **C2 TE S1** class in accordance with **EN 12004**, such as Technokolla's **TECHNOLA** and **TC-LAX**.

If vitreous mosaic is used, the system will comprise **TECHNOMOS** blended with **TC-LAX**, diluted with water in a 1:1 ratio.

The adhesives conform to European standards **EN 12004 C2TE**, **EN 12002 S1**.

Joints measuring at least 4-5 mm, grouted with two-pack epoxy grouting, such as **SKYCOLORS**, which conforms to European standard **EN 13888 RG**.

Amount of adhesive required:

TECHNOLA and **TC-LAX** 4 and 1.15 kg/m²

TECHNOMOS and **TC-LAX** 1:1 with water 4 and 0.7 kg/m²

Amount of grouting required:

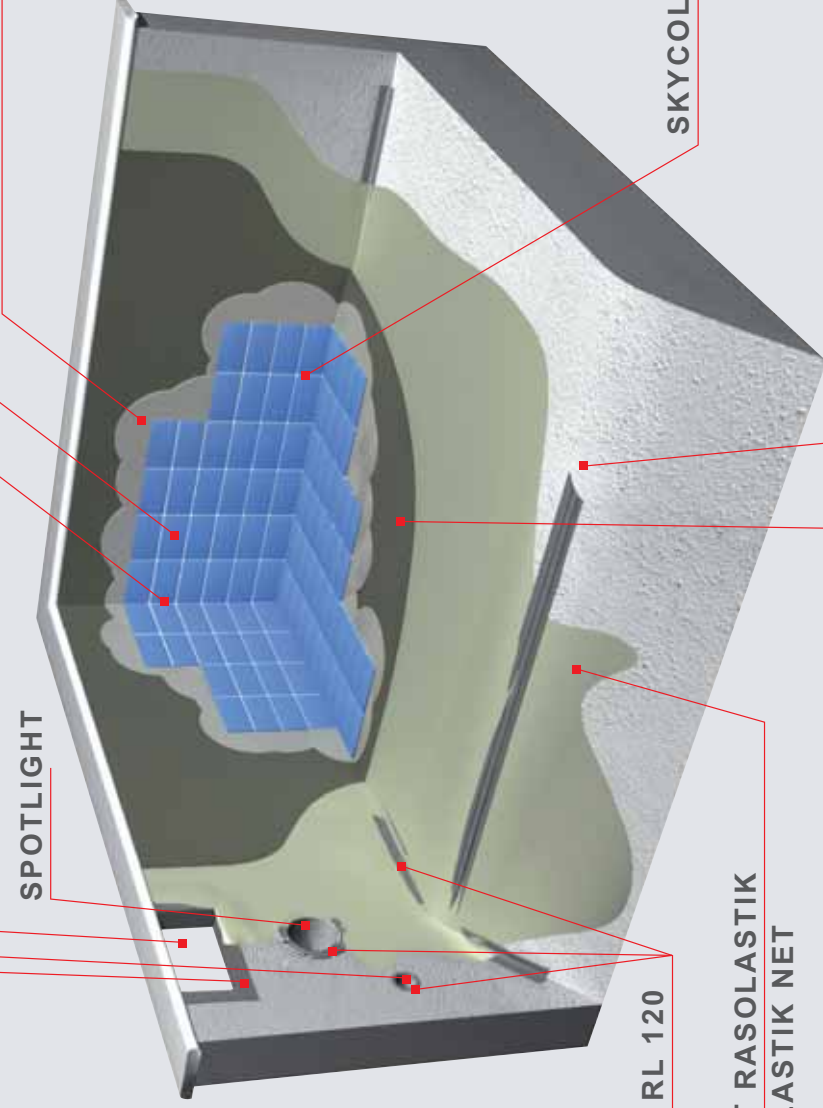
1.8 kg/m² (12x24 cm format, 10 mm joints)

1.5 kg/m² (mosaic in the 2x2 cm format, 2 mm joints)



07 Laying swimming pools and wellness centers

BANDELLA RL 120
DELIVERY OUTLET
SKIMMER
SPOTLIGHT
SWIMMING POOL GROUTING
TILE
TECHNOLA AND TC-LAX



BANDELLA RL 120
1ST COAT RASOLASTIK
+ RASOLASTIK NET

2ND COAT RASOLASTIK



Raso or Gap

Cement-based skimming plaster applied in 2 to 10 mm layers for indoor and outdoor use (RASO). Fiber-reinforced cement-based skimming plaster applied in 3 to 30 mm layers for indoor and outdoor use (GAP). The substrates must be levelled with RASO or GAP before the waterproofing product is applied. RASO conforms to European standard EN 13813, class CT C12 F4. GAP conforms to European standard EN 1504-3, class R2 PCC.



Rasolastik

RL 120 strips and RASOLASTIK-NET netting. RASOLASTIK becomes a waterproofing system that lasts a very long time. RASOLASTIK conforms to standard EN 14891 class CM OP. RASOLASTIK ADV HD can be used as an alternative, as it provides the same performance levels as RASOLASTIK. RASOLASTIK and RASOLASTIK ADV HD conform to standard EN 1504-2, class PI-MC-IR.



Technola with Tc-Lax

When blended with TC-LAX latex, TECHNOLA becomes a high-performance two-pack system of the C2 TE S1 class in accordance with EN 12004, which is ideal for this sort of application. As an alternative, we recommend the TECHNORAP-2 adhesive or, for vitreous mosaics, TECHNOMOS blended with TC-LAX diluted with water in a 1:1 ratio.



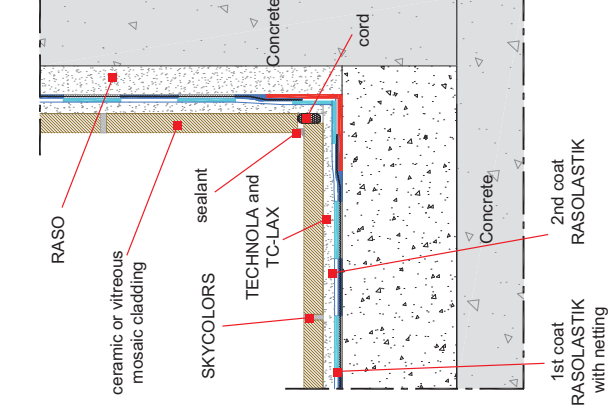
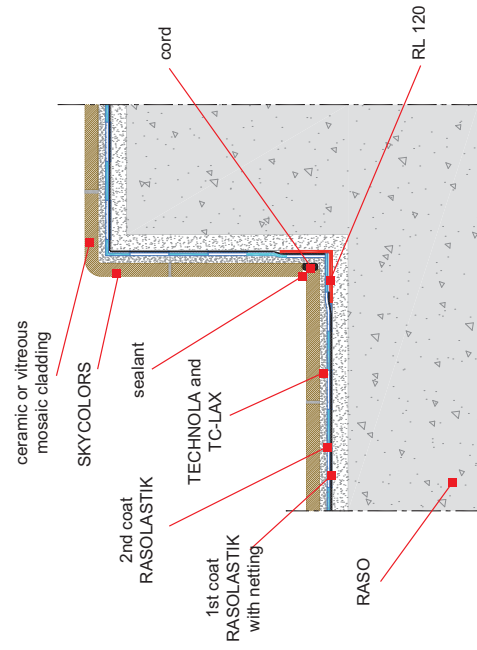
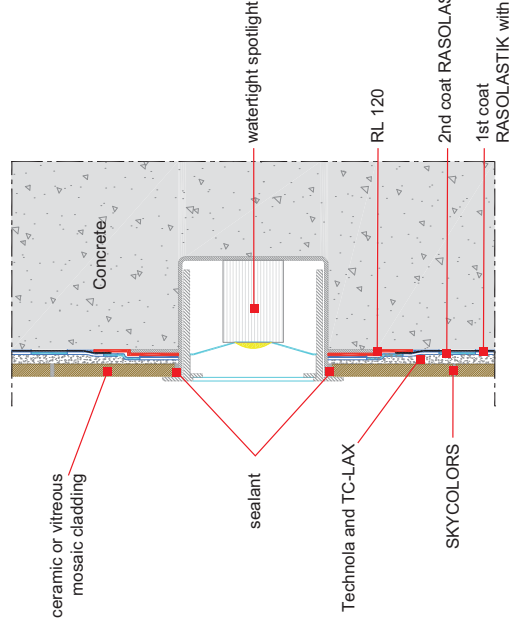
Skycolors

Formulated for joints 2 to 20 mm wide, SKYCOLORS is the epoxy grouting with a high chemical strength that's ideal for SPAs, beauty-farms and wellness centers. But it can also be used for swimming pools, private bathrooms, kitchen surfaces and, more generally, wherever the utmost hygiene is required. The wide range of bright and shiny colours makes the floors and walls even more attractive and harmonizes the entire room setting. SKYCOLORS conforms to standard EN 13888 CLASS RG.



Technocolors

A newly formulated highly water-repellent product for 1 to 8 mm joints that features an extraordinarily velvety finish and an exceptional gloss. Thanks to its extraordinary characteristics, it is ideal for grouting all types of ceramic tiles used in swimming pools. TECHNOSTUK 2-12 and TECHNOSTUK G.G. All the above-mentioned grouting products conform to European standard EN 13888 CLASS CG2.



Tc-Stuk

TC-STUK is used as an additive for the TECHNOSTUK G.F., 2-12, G.G. and TECHNOCOLORS grouting lines whenever the joints need greater resistance and compactness, less porosity and absorption. For this application, where high resistance to chemicals and heat are required, it is advisable to mix the grouting products with TC-STUK instead of water.

