

- Low modulus adhesives and grouting compounds able to withstand the dimensional variations of the materials
- Waterproofing products that are long-lasting and that are not subjected to ageing.
- Read the technical data sheets of the materials used so as to check their limits
- The joints must be at least 4 mm wide
- Certified high-performance adhesives
- Create expansion joints every 12 m² of tiled floor surface
- The substrate must provide a high mechanical performance

And we know how to solve them

- Sudden temperature variations and expanding materials
- Waterproofing which deteriorates over the years
- Water infiltrations
- No expansion joints
- Closely laid tiles
- Unsuitable adhesives and grouting
- Irregular screeds

We understand the problems

New terraces

Specification

- SCREED

Cement-based mortar screed at least 4 cm thick made of quickly evaporating, normally setting binder such as **TECHNOKOLLA'S KRONOS** and siliceous aggregates with 0 to 8 mm continuous grain size, reinforced with synthetic fibers and/or metal netting. Screed resistance must be 28-30 N/mm² after 28 days, while it must be possible to begin fixing the ceramic, marble and natural stone tiles 24/-48 days after application. Screed reinforcing with fibers such as **TECHNOKOLLA'S FS-18** and/or Ø 2 mm 5x5 cm mesh galvanized metal netting positioned at 1/3rd of the screed layer. Dosage for 1 m³ of 0 to 8 mm aggregate: 250 kg **KRONOS**; 150 l water 1 kg **FS-18** fibers.

- WATERPROOFING

Waterproofing layer made of non-carbonating cement-based skimming plaster conforming to European standard **EN 1504-2**, class **PI-MC-IR** and with certificate of fitness for use as a waterproofing compound issued by **SÄUREFLIESNER -VEREINIGUNG E.V.** and class **CM OP**, in accordance with standard **EN 14891**, such as **TECHNOKOLLA'S RASOLASTIK** applied in 2 coats with a roller or brush for a 3 mm overall thickness, reinforced with **RASOLASTIK-NET FIBERGLASS NETTING** in the first coat and with Technokolla's **BANDELLA RL 120** sealing tape to seal the corners, edges and expansion joints. Amount required: 1.6 kg/m² for every mm of thickness

- FLOORING

Flooring and skirting in body-coloured vitrified stoneware tiles in formats of up to 3600 cm², fixed with cement-based adhesive for outdoor use such as Technokolla's **TECHNOSTAR HD** or **TECHNO-ONE HD** for formats of up to 1100 cm², or **TECHNOLA** with **TC-LASTIC** for formats of up to 3600 cm².

TECHNO-ONE HD conforms to European standard **EN 12004 C2TE**. **TECHNOSTAR HD** and **TECHNOLA** with **TC-LASTIC** conform to European standards **EN 12004 C2TE**, **EN 12002 S1 S2**.

4-5 mm joints grouted with cement-based grouting for outdoor use, such as **TECHNOKOLLA'S TOPSTUK**, which conforms to European standards **EN 13888 CG2** and **EN12002 S1**.

Floor-skirting joint and fractioning joints every 9 m², sealed with silicone sealant such as Technokolla's **NEUSIL** after the substrate has been prepared with **PRIMERSIL** primer applied with a brush throughout the entire depth of the joint and with synthetic cord positioned successively.

To proceed in the correct way, it is advisable for the silicone grouting to be applied before cementitious grouting.

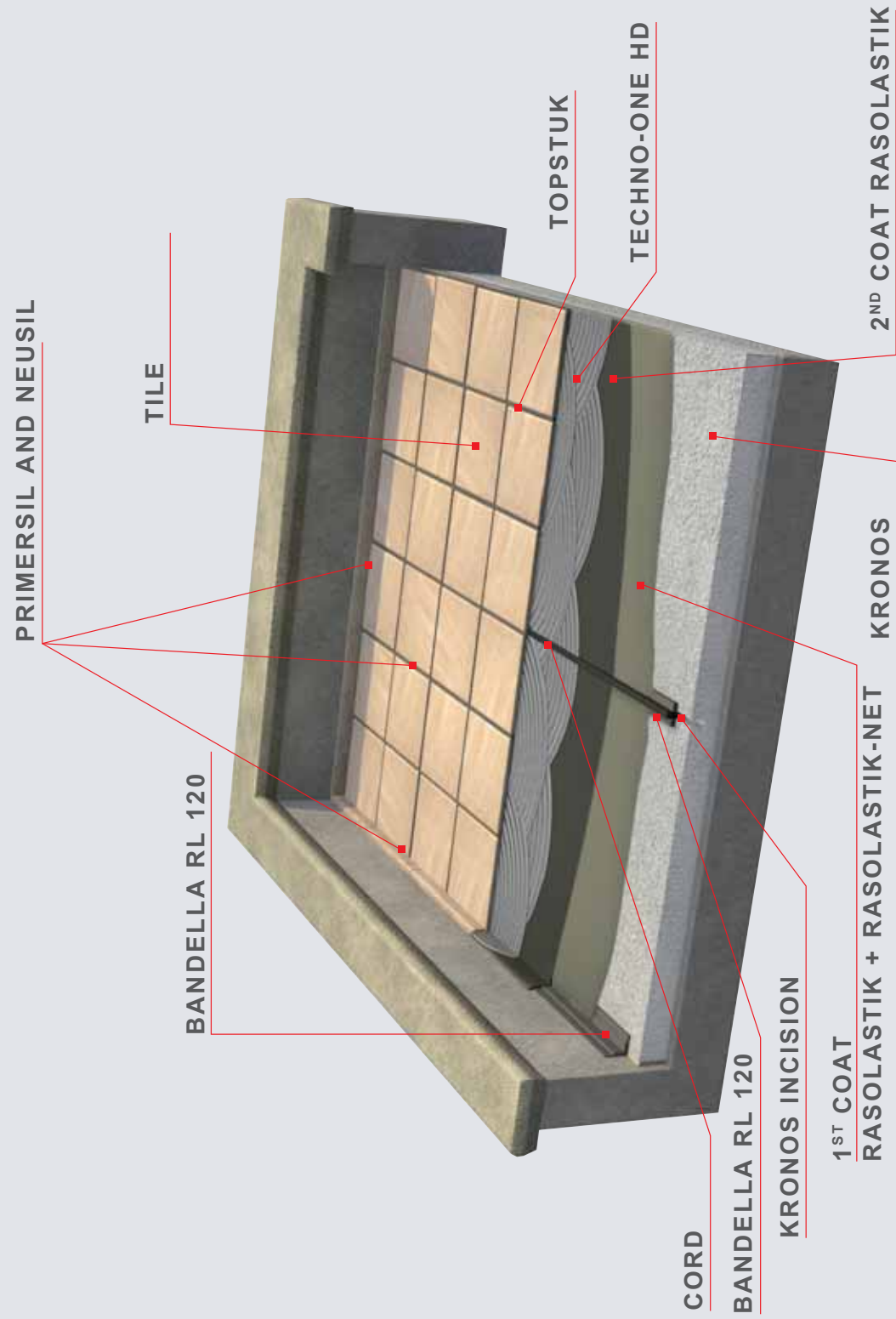
Amount of adhesive required: **TECHNOSTAR HD** 4.0 kg/m²; **TECHNO-ONE HD** 4 kg/m²; **TECHNOLA** with **TC-LASTIC** 4 kg/m².

Amount of grouting required: 0.35 kg/m² (30x30 cm format, 4 mm joints)

New terraces



10 New terraces



Kronos

A binder to use instead of cement to form screeds. Guarantees >30 MPa compressive strength. The product features compensated shrinkage and can be waterproofed with RASOLASTIK just 3 days after application. For outdoor use, it is always advisable to use reinforcing netting and FS-18 synthetic fibers to increase the flexural and compressive strength of the screed, respectively.



Rasolastik

For refurbishing the waterproofing layer **WITHOUT DEMOLISHING**. RASOLASTIK guarantees a waterproofing action over time and has been certified as a waterproofing system by the SAUREFLIESNER-VEREINIGUNG E.V. institute, in accordance with standard EN 14891 **CM-OP CE MARKING**. Conforms to European standard EN 1504-2, class PI-MC-IR.



Techno-One HD Technostar HD

One-pack adhesive suitable for fixing vitrified stoneware outdoors. **TECHNO-ONE HD** conforms to EN 12004 C2TE standards. If the tile format is larger than 33x33 cm, it is advisable to use a highly flexible adhesive such as **TECHNOSTAR HD**, which conforms to standards EN 12004 C2TE and EN 12002 S1.



Technola with Tc-Lastic

The highly flexible two-pack adhesive suitable for fixing vitrified stoneware and natural stones outdoors. Can be used for formats no larger than 3600 cm². **TECHNOLA** with **TC-LASTIC** conforms to European standards EN 12004 C2TE, EN 12002 S2.



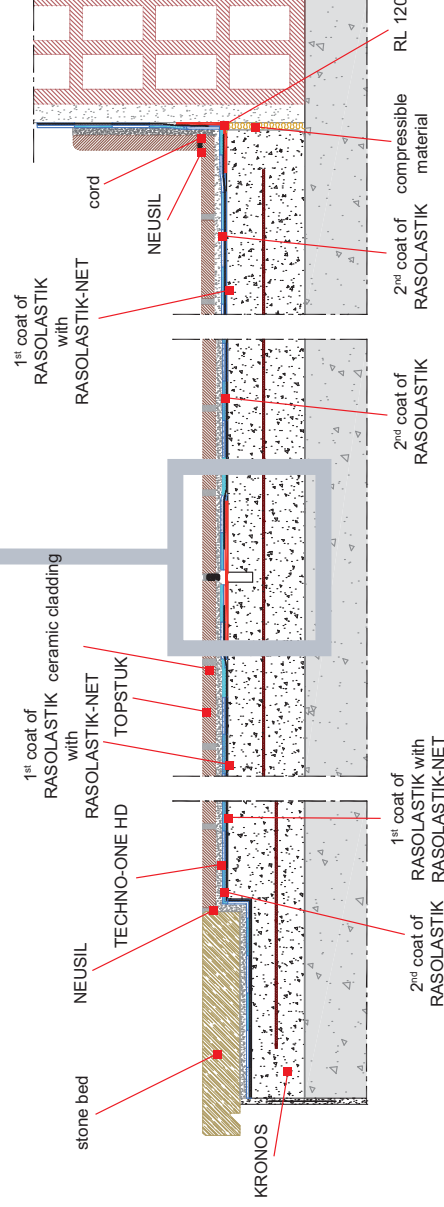
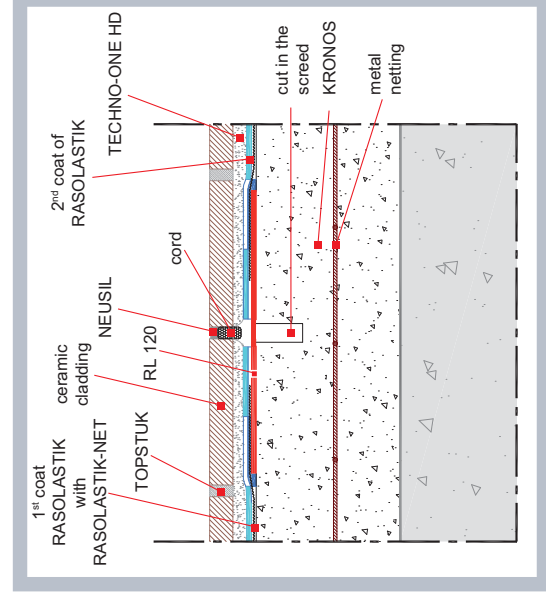
Topstuk

Highly flexible, low modulus, water repellent cement-based grouting compound with S1 classification in accordance with EN 12002 standards, ideal for cladding that's highly stressed by temperature variations and the weather conditions. **TOPSTUK** conforms to European standard EN 13888 CG2. All Technokolla's cement-based grouting compounds can be used for this application. In this case, it is advisable to mix the product with **TC-STUK** latex.



Neusil and Primersil

The silicone sealant for filling expansion joints which, used in conjunction with **PRIMERSIL** and synthetic **CORD**, makes the joint long-lasting.



Technokolla
system
design
systems

Technical
Drawings

R E C O M M E N D E D P R O D U C T