

## Specification

### - TILE LAYING ON INDOOR WALLS (WITHOUT PRIOR TREATMENT)

Indoor walls covered with vitrified stoneware, single-fired ceramic or natural stone tiles fixed to a suitable and correctly weathered substrate with one-pack adhesive for indoor use such as **TECHNO-PLATRE**, **TK-3000** or **TK-7000** ready-to-use adhesive paste suitable for fixing vitrified stoneware, which conform to European standards **EN 12004 C1E** (Techno-platre) and **D2TE** (TK-3000 TK-7000).

Joints grouted with cement-based grouting such as Technokolla's **TECHNOCOLORS**, which conforms to European standard **EN 13888 CG2**.

Amount of adhesive required:

**TECHNO-PLATRE** 4 kg/m<sup>2</sup>

**TK-3000** 3 kg/m<sup>2</sup>

**TK-7000** 3 kg/m<sup>2</sup>

Amount of grouting required:

0.500 kg/m<sup>2</sup> (30x30 cm format, 4 mm joints)

### - TILING LAYING ON INDOOR WALLS (AFTER APPLICATION OF PRIMER)

Indoor walls covered with vitrified stoneware, single-fired and natural stone tiles on a suitable, correctly weathered substrate treated with synthetic resin-based primer such as Technokolla's **PRIMER-T**, using **TECHNO-ONE** one-pack adhesive conforming to European standard **EN 12004 C2TE**.

Joints grouted with cement-based grouting such as Technokolla's **TECHNOCOLORS**, which conforms to European standard **EN 13888 CG2**.

Amount of primer required:

**PRIMER-T** 0.1-0.2 kg/m<sup>2</sup>

Amount of adhesive required:

**TECHNO-ONE** 4 kg/m<sup>2</sup>

Amount of grouting required:

0.35 kg/m<sup>2</sup> (30x30 cm format, 4 mm joints)

- And we know how to solve them
- Find out exactly how the surface has been weathered and check the residue humidity in the plaster
  - Eliminate the rising damp before laying the tiles
  - Use specific products or apply primer before the cement-based products

- We understand the problems
- Damp plaster
  - Cracked or crumbling substrates
  - Rising damp
  - Unsuitable adhesives
  - Formation of detaching salts

## Fixing on gypsum-based plaster

- We understand the problems
- Damp plaster
  - Cracked or crumbling substrates
  - Rising damp
  - Unsuitable adhesives
  - Formation of detaching salts

## Fixing on gypsum-based plaster



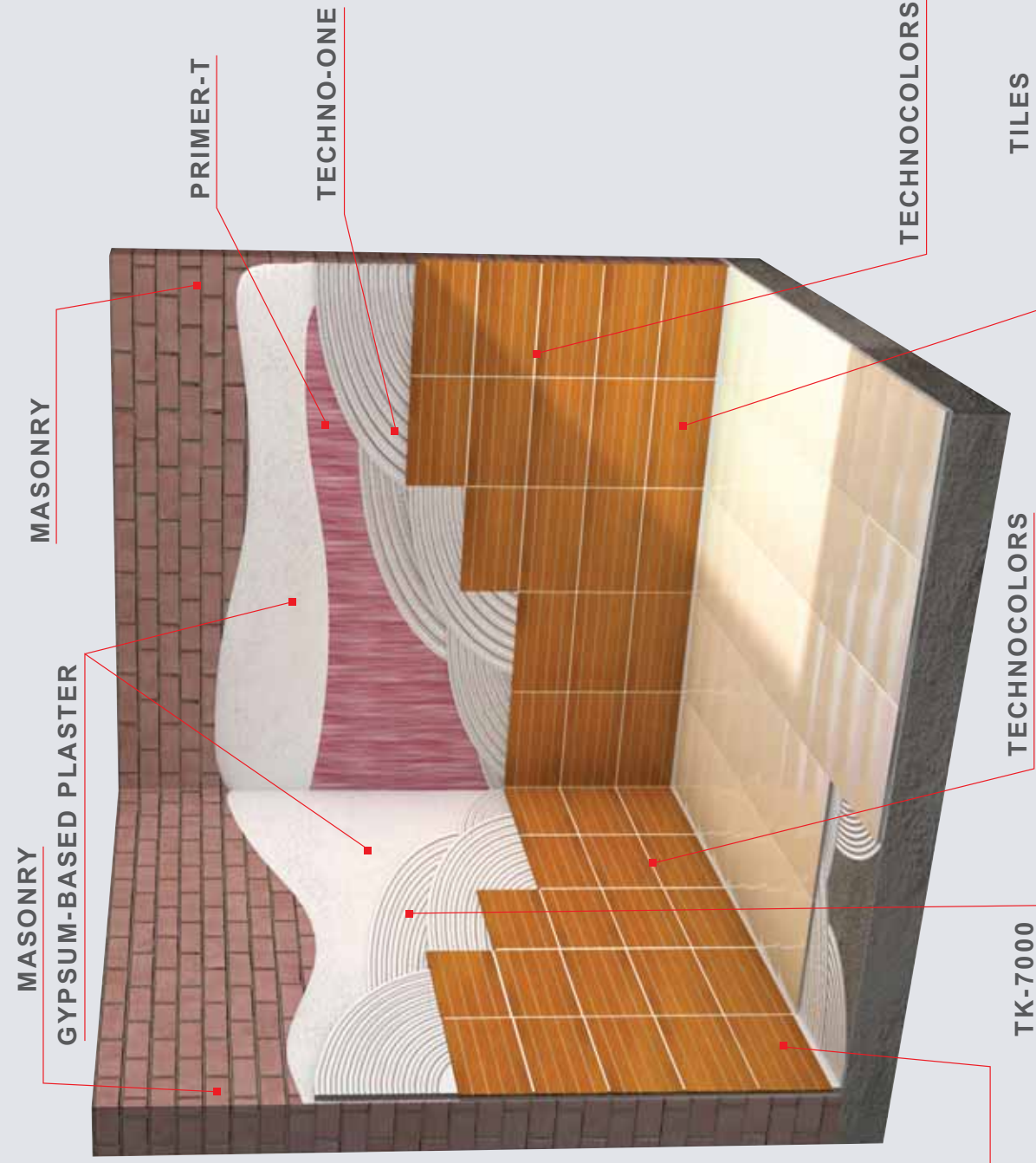
www.layout.it

**Technokolla S.p.A.**  
Via Radici in Piano, 558  
41049 Sassuolo (MO) • Italy  
Tel. +39 0536 862269  
Fax +39 0536 862660

www.technokolla.com >>  
marketing@technokolla.com



# 17 Fixing on gypsum-based plaster



## Techno-Platre

One-pack white powder adhesive for fixing ceramic tiles straight on to already prepared gypsum-based plaster surfaces and scagliola without the prior application of primer.

**TECHNO-PLATRE** conforms to European standard **EN 12004 C1E**.



## Tk-3000

Ready-to-use adhesive paste for fixing ceramic tiles to gypsum-based substrates indoors.

**TK-3000** conforms to European standard **EN 12004 D2TE**.



## Tk-7000

Ready-to-use adhesive paste for fixing ceramic floor and wall tiles to gypsum-based substrates.

**TK-7000** conforms to European standard **EN 12004 D2TE**.



## Primer-T

Synthetic resin based primer for preparing gypsum or cementitious substrates.



## Techno-One

The highly flexible one-pack adhesive suitable for fixing non-absorbent materials like vitrified stoneware.

**TECHNO-ONE** conforms to European standard **EN 12004 C2TE**.

### DIRECT LAYING



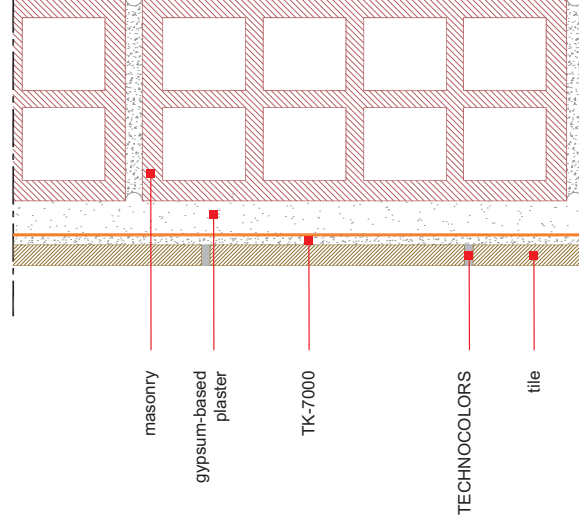
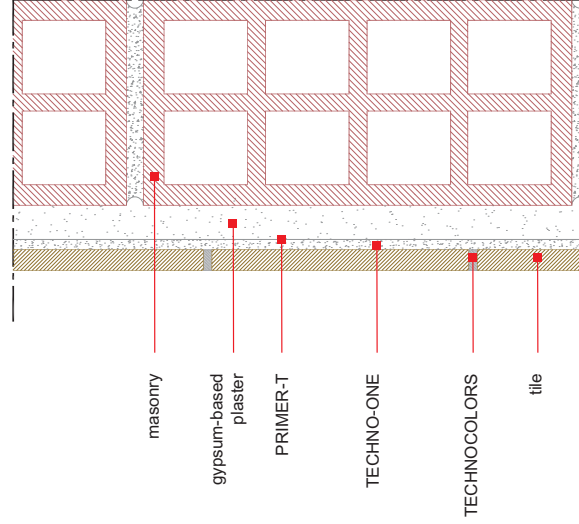
### LAYING ON PRIMER



## Technocolors

This is a revolutionary cement-based sealant for building purposes. A newly formulated highly water-repellent product, it features an extraordinarily velvety finish and an exceptional gloss. Thanks to its extraordinary characteristics, it is ideal for all types of ceramic tiles, marble and heating screeds.

**TECHNOCOLORS** conforms to European standard **EN 13888 CG2**.



# Technical Drawings