

## Specification

### - OUTDOOR WALL CLADDING

Outdoor walls clad in vitrified stoneware, single-fired or natural stone tiles applied to a suitable and correctly weathered substrate (3 months for concrete, 3 weeks for plaster). Tiles in formats of up to 1600 cm<sup>2</sup> fixed with cement-based adhesive for outdoor use, such as **TECHNOSTAR HD**, which conforms to European standards **EN 12004 C2TE**, **EN 12002 S1**. Formats of up to 2100 cm<sup>2</sup> can be fixed with cement-based based two-pack adhesive such as Technokolla's **TECHNOLA** blended with **TC-LASTIC** latex, or quick-setting cement-based two-pack adhesive such as **TECHNORAP-2**, which conforms to European standards **EN 12004 C2TE**, **EN 12002 S2** (Technola with TC Lastic) **C2FT**, **S1** (Technorap-2). The tiles must be spread with a double coat of adhesive to prevent air pockets from forming underneath. 4-5 mm joints grouted with low modulus cement-based grouting compound such as Technokolla's **TOPSTUK**, which conforms to European standards **EN 13888 CG2** and **EN 12002 S1**.

Expansion joint every 12 m<sup>2</sup>, grouted with Technokolla's **NEUSIL**, in the case of stone cladding. If ceramic tiles are laid, use Technokolla's **ACESIL-310** and, in both cases, after synthetic cord has been positioned in the joint.

To proceed in the correct way, it is advisable for the silicone grouting to be applied before cementitious grouting.

Amount of adhesive required: 4 kg/m<sup>2</sup>

Amount of grouting required: 0.35 kg/m<sup>2</sup> (30x30 cm format, 4 mm joints)

- areas less than 12 m<sup>2</sup>
- The joints are essential and must enclose
- Certified high-performance adhesives mm wide
- The joints between the tiles must be at least 4
- The tile formats must not exceed 2000 cm<sup>2</sup>
- materials used so as to check their limits
- Read the technical data sheets of the variations of the materials
- compounds able to withstand the dimensional
- Low modulus adhesives and grouting
- Carefully evaluate the substrate

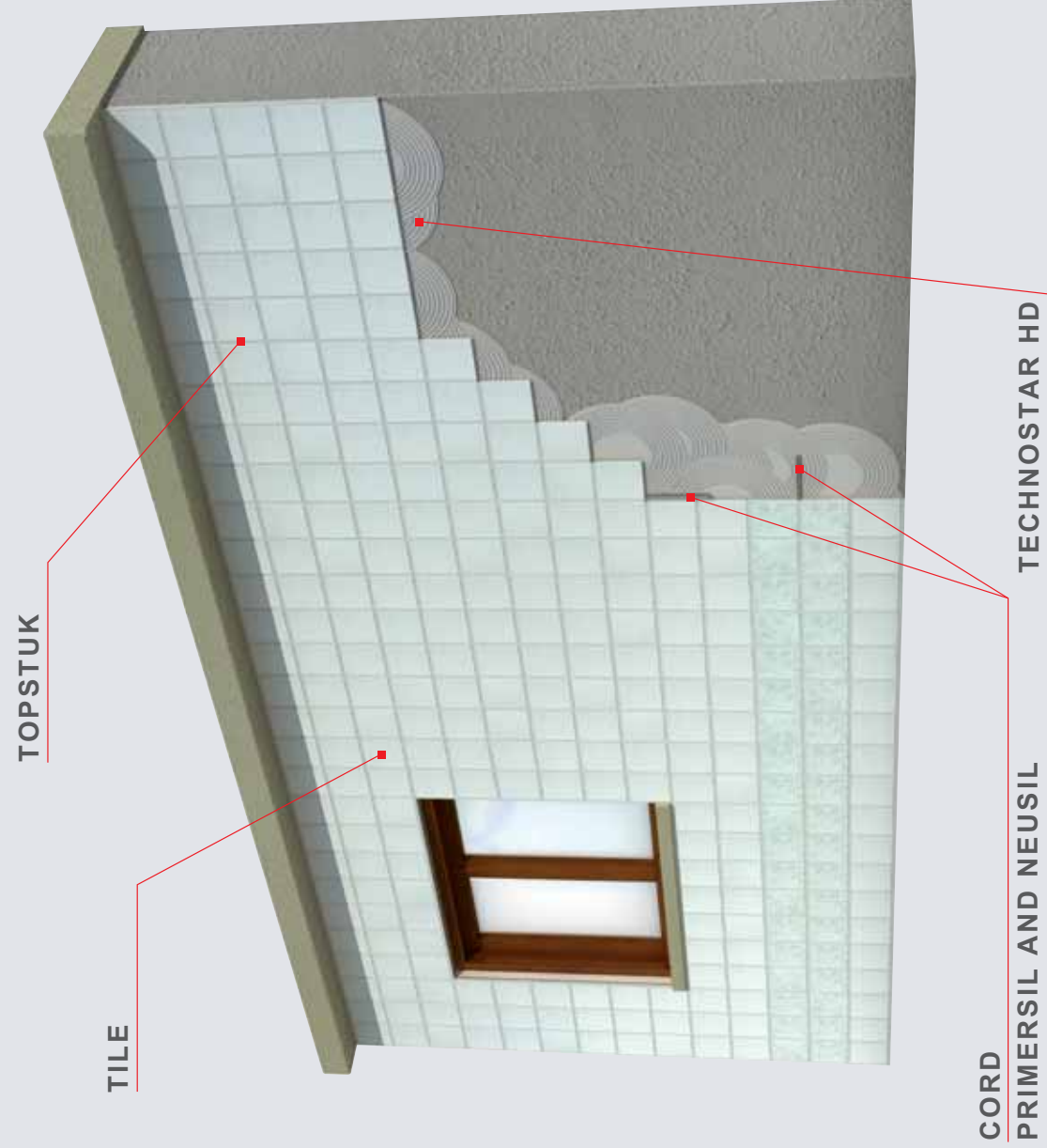
### And we know how to solve them

- Unsuitable substrates
- Oscillations in the building
- Sudden temperature variations and expanding materials
- Water infiltrations
- Tiles of an unsuitable size or nature for outdoor use
- Closely laid tiles
- Unsuitable adhesives and grouting
- No expansion joints

### We understand the problems

## Fixing on façades

# 04 Fixing on façades



## Technostar HD

The one-pack adhesive suitable for fixing vitrified stoneware and natural stones outdoors. Can be used for laying **formats not larger than 1600 cm<sup>2</sup>**.

**TECHNOSTAR HD** has been certified as conforming to **EN 12004 C2TE, EN 12002 S1** standards.



## Technola with TC-Lastic

The highly flexible two-pack adhesive suitable for fixing vitrified stoneware on façades. Can be used for laying **formats not larger than 2100 cm<sup>2</sup>**.

**TECHNOLA** with **TC-LASTIC** conforms to European standards **EN 12004 C2TE, EN 12002 S2**.



## Technorap-2

The highly flexible **quick-setting** two-pack adhesive suitable for fixing vitrified stoneware and natural stones outdoors. Can be used for formats no larger than 2100 cm<sup>2</sup>.

**TECHNORAP-2** conforms to European standards **EN 12004 C2FT, EN 12002 S1**.



## Topstuk

Low modulus, mould-proofing and water repellent grouting for cladding that's highly stressed by temperature variations and the weather conditions.

**TOPSTUK** conforms to European standards **EN 13888 CG2, EN 12002 S1**.



## Neusil and Primersil

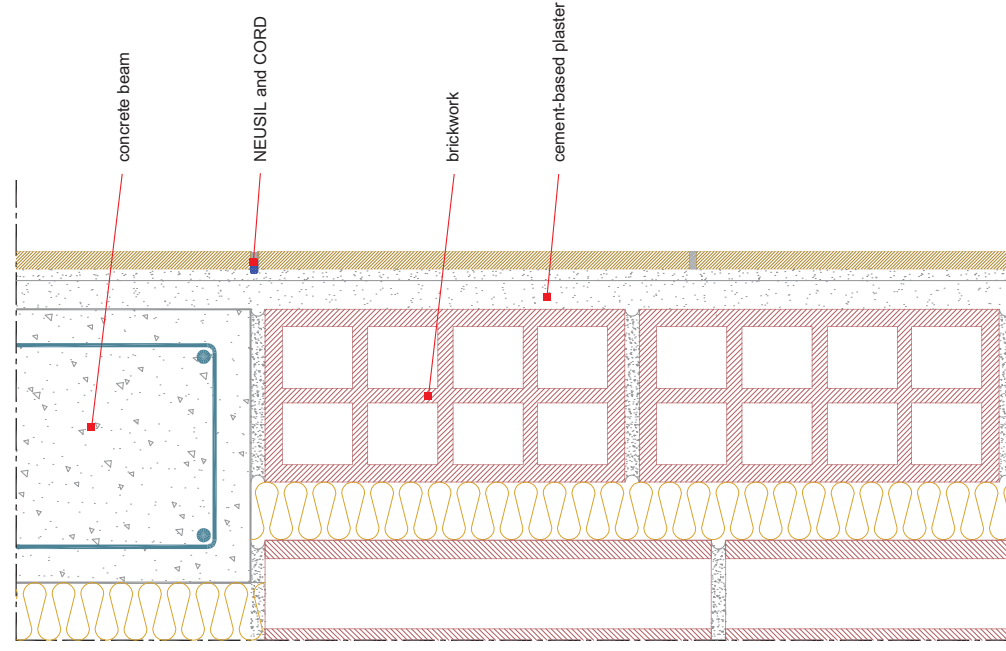
The silicone sealant for filling expansion joints which, used in conjunction with **PRIMERSIL** and synthetic **CORD**, makes the joint long-lasting. Sealing with **NEUSIL** must be done before cement-based grouting is applied.



### R E C O M M E N D E D P R O D U C T

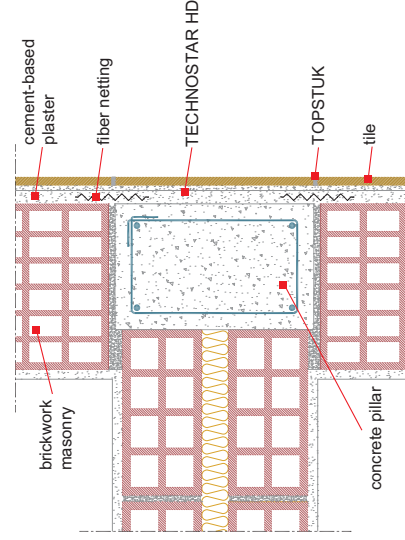


## vertical section



Substrate	Curing period	Compressive strength	Bond to brickwork
Concrete	3 months	> 8 N/mm <sup>2</sup>	
Cement-based plaster	3 weeks	> 8 N/mm <sup>2</sup>	> 0.7 N/mm <sup>2</sup>

## plan view



# Technical Drawings