

Specification

- SCREED

Cement-based mortar screed at least 4 cm thick made of quickly evaporating, normally setting binder such as Technokolla's **KRONOS** and siliceous aggregates with 0 to 8 mm continuous grain size, reinforced with synthetic fibers and/or metal netting. Screed resistance must be 28-30 N/mm² after 28 days and allow the marble and natural stone tiles to be laid 24-48 hours after application.

Screed reinforcing with fiber such as **FS-18** by Technokolla and/or 5x5 cm mesh galvanized metal netting with 2 mm diameter wire installed at 1/3rd of the screed thickness.

Dosage for 1 m³ of 0 to 8 mm aggregate:
250 kg **KRONOS**, 150 l water, 1 kg **FS-18**

- FLOORING

Flooring and skirting in slabs of marble or natural stone fixed on a **KRONOS** screed with highly flexible cement-based adhesive suitable for marble and natural stone, such as **TECHNOSTONE**, **TECHNORAP-2**, or epoxyurethane adhesive such as **ALL 9000** by Technokolla, conforming to European standards **EN 12004 C2FT**, **EN 12002 S1** (Technostone and Technorap-2) and **R2T** (ALL 9000). 4-5 mm joints grouted with low modulus cement-based grouting such as Technokolla's **TECHNOCOLORS**, which conforms to European standard **EN 13888 CG2**.

Expansion joints every 12 m² sealed with Technokolla's **NEUSIL** after the substrate has been prepared with **PRIMERSIL** primer applied with a brush throughout the entire depth of the joint and with synthetic cord positioned successively.

To proceed in the correct way, it is advisable for the silicone grouting to be applied before cementitious grouting.

And we know how to solve them

- Use quickly evaporating and setting products
- Use two-pack products that guarantee a high performance
- The screeds must guarantee a high mechanical performance

We understand the problems

- Staining on the surface of the stone
- Marble that tends to warp
- Substrates with insufficient compressive strength
- A high residue degree of humidity in the screed

Fixing marbles, granites and natural stones

Technokolla
system
design
systems

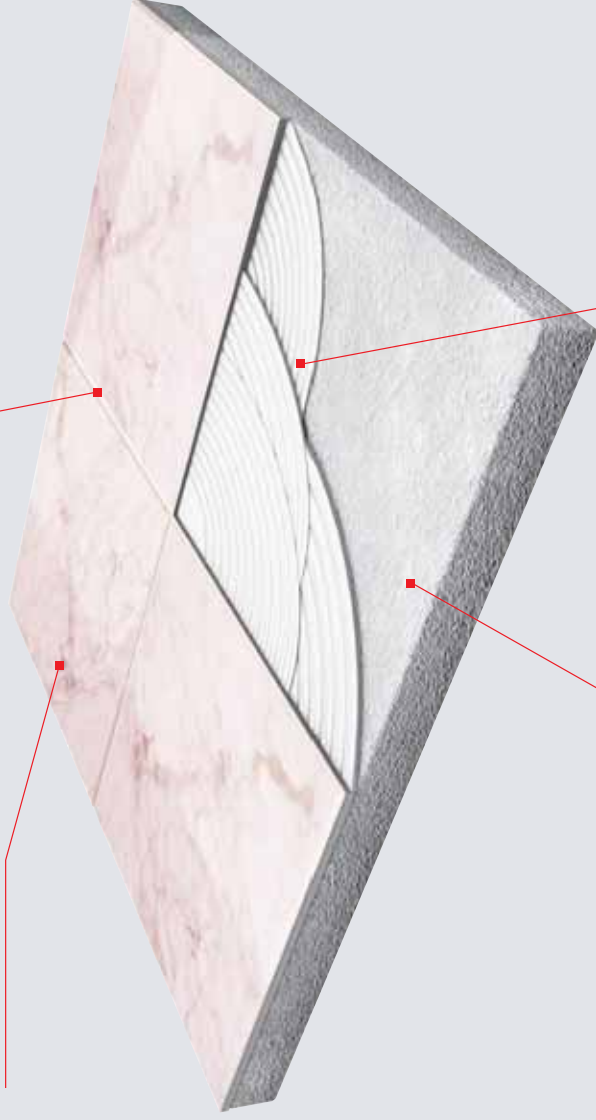
Fixing marbles, granites and natural stones



14 Fixing marbles, granites and natural stones

TECHNOCOLORS

SLAB



KRONOS

TECHNORAP-2



Kronos

Binder to use instead of cement to form screeds. Guaranteed quick-setting with very low shrinkage, allowing marble and natural stone to be fixed 24/48 hours after casting. >30 MPa compressive strength is guaranteed. Recommended thickness from 3 to 8 cm



Technorap-2

Highly flexible, **fast-drying two-pack** adhesive for quickly laying stone materials in small or large formats, or when liable to stain or warp to a slight extent.

TECHNORAP-2 conforms to European standards **EN 12004 C2FT, EN 12002 S1**.



All 9000

High-performance **polyurethane two-pack** adhesive particularly suitable for fixing natural stone affected by the damp or liable to warp.

ALL 9000 conforms to European standard **EN 12004 R2T**.



Technocolors

This is a revolutionary cement-based sealant for building purposes. A newly formulated highly water-repellent product, it features an extraordinarily velvety finish and an exceptional gloss.

TECHNOCOLORS conforms to European standard **EN 13888 CG2**.

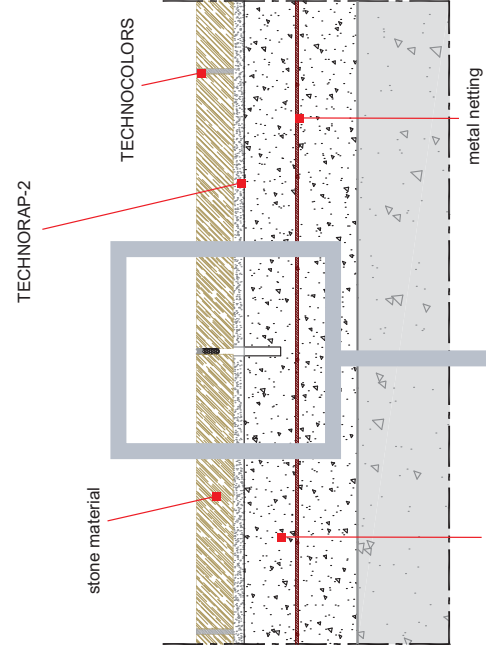
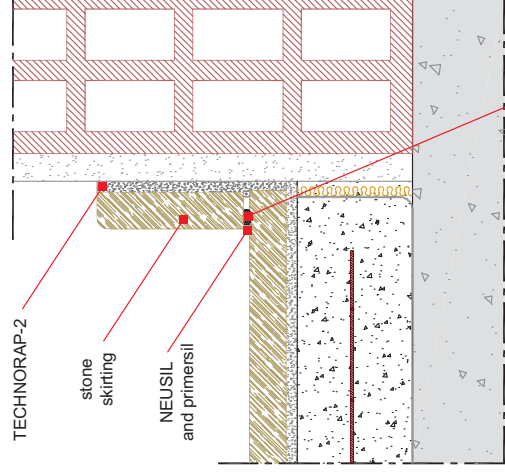
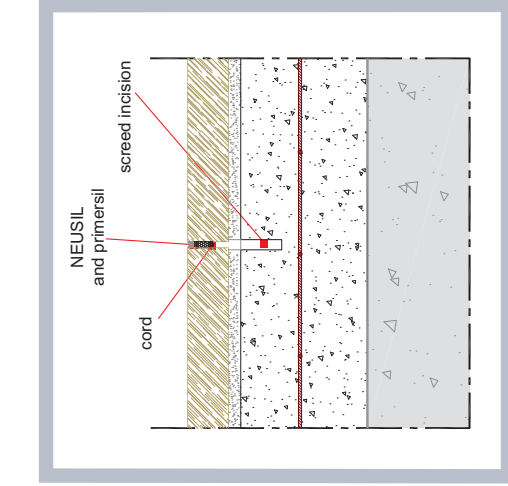


Neusil and Primersil

The silicone sealant for filling expansion joints which, used in conjunction with **PRIMERSIL** and synthetic **CORD**, makes the joint long-lasting.



Technokolla
system
design
systems



Technical Drawings