

Specification

- SCREED

Cement-based mortar screed at least 4 cm thick made of quickly evaporating, normally setting binder such as Technokolla's **KRONOS** and siliceous aggregates with 0 to 8 mm continuous grain size, reinforced with synthetic fibers and/or metal netting. Screed resistance must be 28-30 N/mm² after 28 days and allow ceramic tiles, marble and natural stones to be laid 24-48 hours after casting.

Screed reinforcing with fiber such as Technokolla's **FS-18** and/or Ø 2 mm 5x5 cm mesh galvanized metal netting positioned at 1/3rd of the screed layer.

Dosage for 1 m³ of 0 to 8 mm aggregate:

250 kg **KRONOS**

150 l. water

1 kg **FS-18**

- FLOORING

Flooring and skirting in large vitrified stoneware or natural stone fixed to a **KRONOS** screed with highly flexible cement-based adhesive such as **TECHNOSTAR**, conforming to European standards **EN 12004 C2TE**, **EN 12002 S1** or with highly flexible full-bed cement-based adhesive such as **TECHNOMAX**, conforming to European standard **EN 12004 C2E**, or **TECHNORAP-2**, conforming to European standards **EN 12004 C2FT**, **EN 12002 S1** for large formats, all by Technokolla.

4-5 mm joints grouted with low modulus cement-based grouting such as Technokolla's **TECHNOCOLORS**, which conforms to European standard **EN 13888 CG2** or with two-pack epoxy grouting such as **SKYCOLORS**, class **RG**.

Expansion joints sealed with Technokolla's **ACESIL-310**, after synthetic cord has been positioned. **NEUSIL** must be applied in the case of stone floors.

To proceed in the correct way, it is advisable for the silicone grouting to be applied before cementitious grouting.

Amount of adhesive required:

5.5-7 kg/m²

Amount of grouting required:

0.2 kg/m² (60x60 cm format, 4 mm joints)

- Irregular substrates
- Tiles fixed with double coating process, which drastically reduces the laying efficiency
- Very thick layers of adhesive
- Difficulty in achieving a flat tile surface
- Great deal of adhesive used
- Closely laid tiles

And we know how to solve them

- The finishing degree of the substrate must be optimum and there must be no shrinkage, which would create hollows
- Use a thick bed adhesive to avoid the double coating operation, thus reducing both the amount required and its cost
- The adhesive must not drip as this would prevent the tiles from laying flat
- It is essential to allow for joints at least mm wide with large formats

We understand the problems

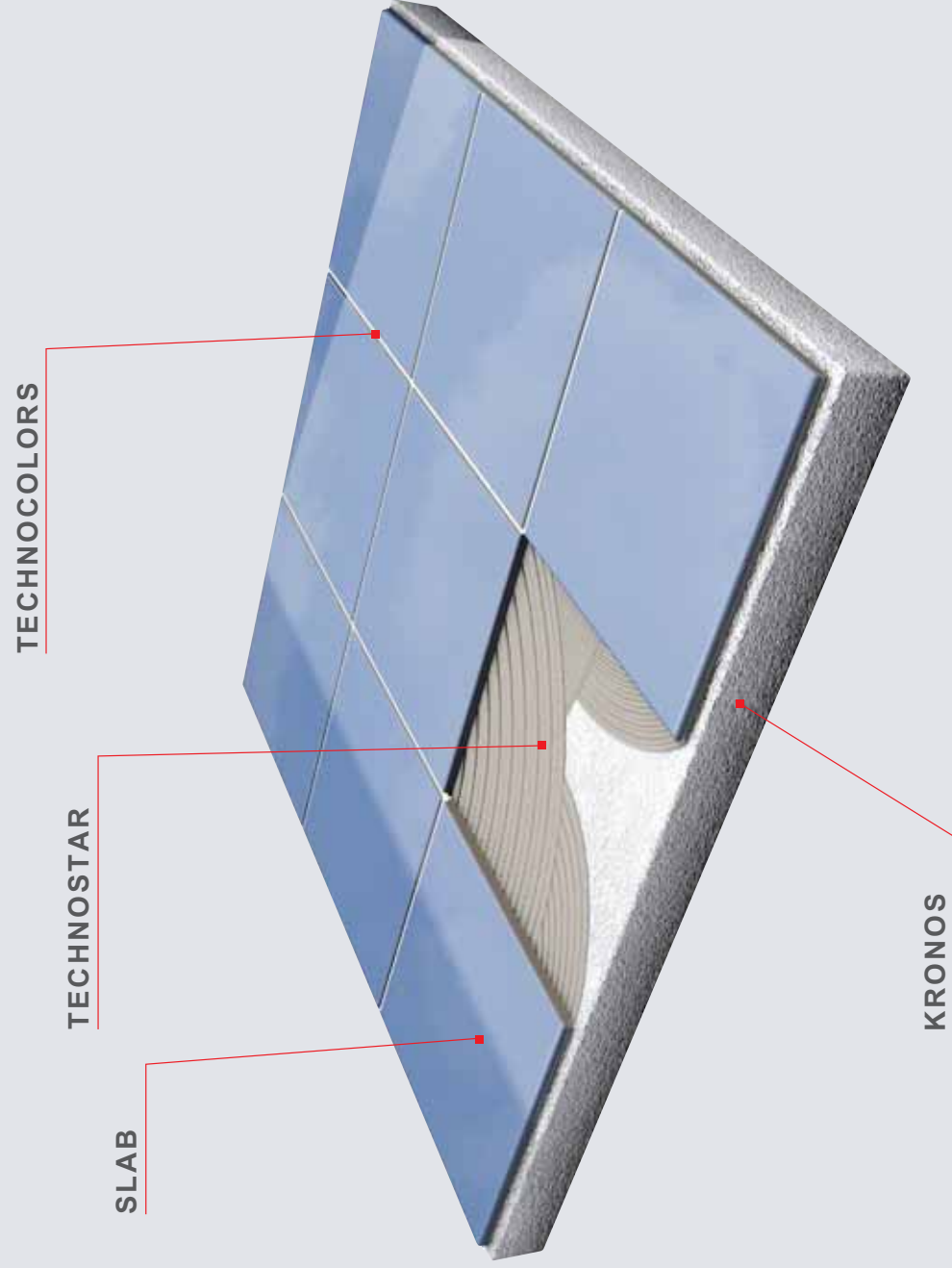
Fixing large formats

Technokolla
system
design systems

Fixing large formats



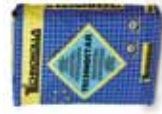
05 Fixing large formats



Kronos

A binder to use instead of cement to form screeds. Guarantees > 30 MPa compressive strength. The product features compensated shrinkage and the tiles can be fixed after just 24 h.

It can be reinforced with **FS-18** synthetic fiber and/or electrowelded netting to increase its compressive and flexural strength still further.



Technostar

The one-pack adhesive suitable for fixing vitrified stoneware and natural stones outdoors. Can be used for laying large formats **up to 15 mm thick**.

TECHNOSTAR has been certified as conforming to **EN 12004 C2TE, EN12002 S1** standards.



Technomax

The one-pack thick bed adhesive that **does not need to be applied in a double layer** even when large tile formats are used.

TECHNOMAX has been certified as conforming to **EN 12004 C2E** standards.



Technorap-2

Highly flexible **quick-setting, two-pack** adhesive used in layers up to 20 mm thick for fixing ceramic tiles of all types, marble and natural stones on irregular substrates. This adhesive is also able to withstand **surfacing on-site**.

TECHNORAP-2 conforms to European standards **EN 12004 C2FT, EN 12002 S1**.



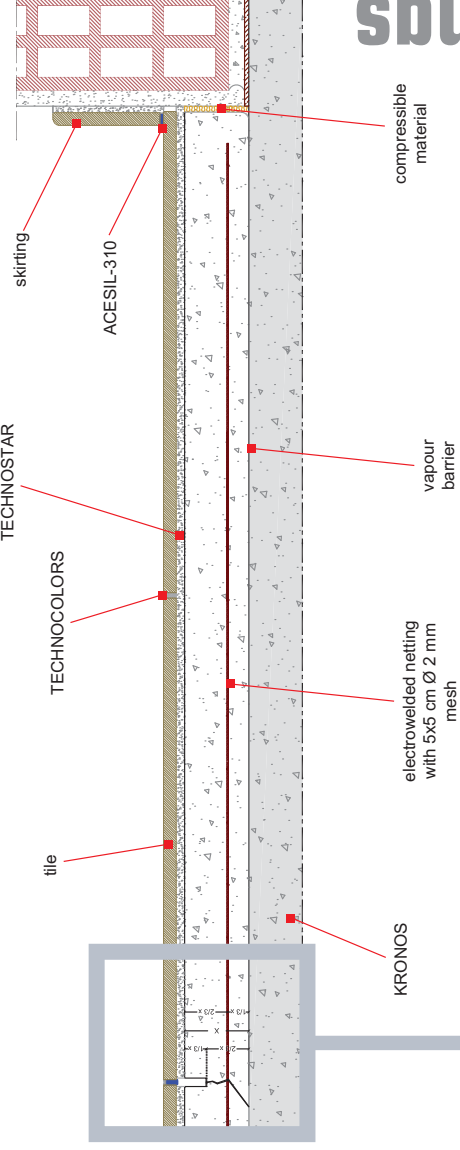
Technocolors

This is a revolutionary cement-based sealant for building purposes. A newly formulated highly water-repellent product, it features an extraordinarily velvety finish and an exceptional gloss. Thanks to its extraordinary characteristics, it is ideal for all types of ceramic tiles, marble and heating screeds. **TECHNOCOLORS** conforms to European standard **EN 13888 CG2**.



Technokolla
system
design
systems

RECOMMENDED PRODUCT



Technical Drawings



Skycolors

SKYCOLORS is an **epoxy** grouting compound with high chemical strength. It is perfect for sealing the joints in floors made of large vitrified stoneware tiles, especially the polished kind with joints wider than 2 mm and is ideal for use in spas, beauty-farms, wellness centers and, more generally, wherever the utmost hygiene is required.

Thanks to its wide range of colours and bright finish, it is the ideal furnishing complement in places where a particularly attractive finish is required. Conforms to standard **EN 13888 CLASS RG**.



Acesil-310

The long-life silicone and elastomer-based sealant used for filling expansion joints. It is used with the cord, which should be positioned at the base of the joint before **ACESIL-310**