

Specification

- SCREED

Cement-based mortar screed at least 4 cm thick made of quickly evaporating, normally setting binder such as Technokolla's **KRONOS** and siliceous aggregates with 0 to 8 mm continuous grain size, reinforced with synthetic fibers and/or metal netting. Screed resistance must be 28-30 N/mm² after 28 days, while it must be possible to begin fixing the composite marble flooring 24-48 days after casting.

Screed reinforcing with fiber such as **FS-18** by Technokolla and/or 5x5 cm mesh galvanized metal netting with 2 mm diameter wire installed at 1/3rd of the screed thickness.

Dosage for 1 m³ of 0 to 8 mm aggregate:
250 kg **KRONOS**, 150 l water, 1 kg **FS-18**

- FLOORING

Flooring and skirting in slabs of composite marble fixed on a **KRONOS** screed with highly flexible cement-based adhesive suitable for composite marble, marble and natural stone, such as Technokolla's **TECHNORAP-2** or epoxyurethane adhesive such as **ALL 9000**, conforming to European standards **EN 12004 C2FT**, **EN 12002 S1** (Technorap-2) and **R2T** (ALL 9000).

4-5 mm joints grouted with low modulus cement-based grouting such as Technokolla's **TECHNOCOLORS**, which conforms to European standard **EN 13888 CG2**.

Expansion joints every 12 m² sealed with Technokolla's **NEUSIL** after the substrate has been prepared with **PRIMERSIL** primer (only for tiles fixed outdoors) applied with a brush throughout the entire depth of the joint and with synthetic cord positioned successively.

To proceed in the correct way, it is advisable for the silicone grouting to be applied before cementitious grouting.
Amount of adhesive required:
from 4 kg/m² (the amount varies depending on the format of the slabs).

Amount of grouting required:
0.35 kg/m² (30x30 cm format, 4 mm joints)

- Use suitable adhesives
- The substrate must provide a high mechanical performance
- Carefully evaluate the limits to use indicated by the manufacturer

And we know how to solve them

- Materials that are very sensitive to moisture
- Materials with a high degree of thermal expansion
- Screeds with insufficient compressive strength
- Irregular screeds

We understand the problems

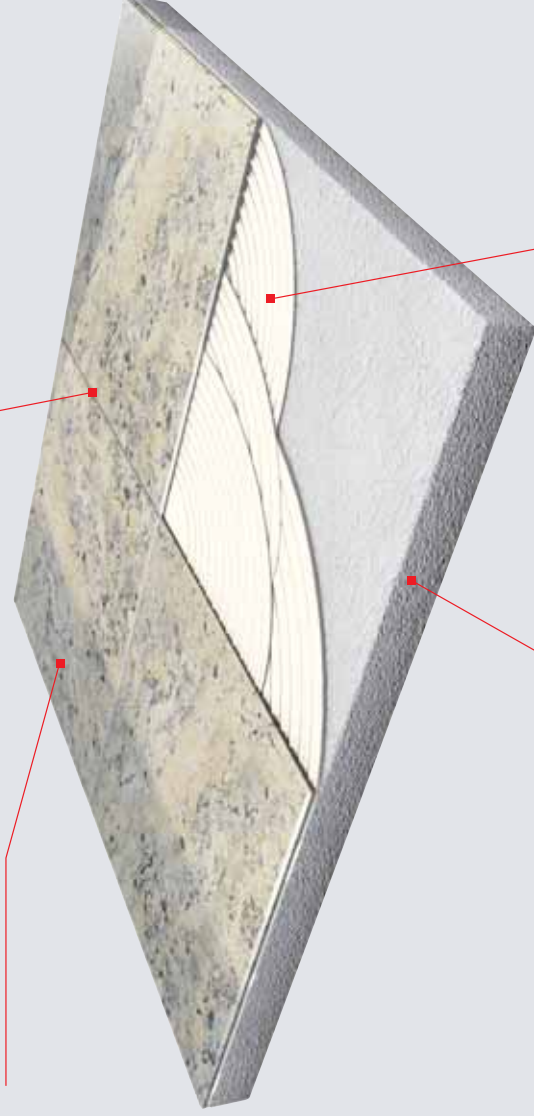
Fixing composite marbles



15 Fixing composite marbles

TECHNOCOLORS

SLAB



KRONOS

TECHNORAP-2



Kronos

Binder to use instead of cement to form screeds. Guaranteed quick-setting with very low shrinkage, allowing composite marble materials to be fixed 24/48 hours after casting. Guarantees >30 MPa compressive strength.



Technorap-2

Highly flexible **quick-drying two-pack** adhesive for fixing composite marble materials that are moderately affected by the damp.

TECHNORAP-2 conforms to European standards **EN 12004 C2FT, EN 12002 S1**.



All 9000

High-performance **polyurethane two-pack** adhesive particularly suitable for fixing composite marble materials that are highly affected by the damp.

ALL 9000 conforms to European standard **EN 12004 R2T**.



Technocolors

Produced in 25 colours, this is a revolutionary cement-based sealant for building purposes. A newly formulated highly water-repellent product, it features an extraordinarily velvety finish and an exceptional gloss.

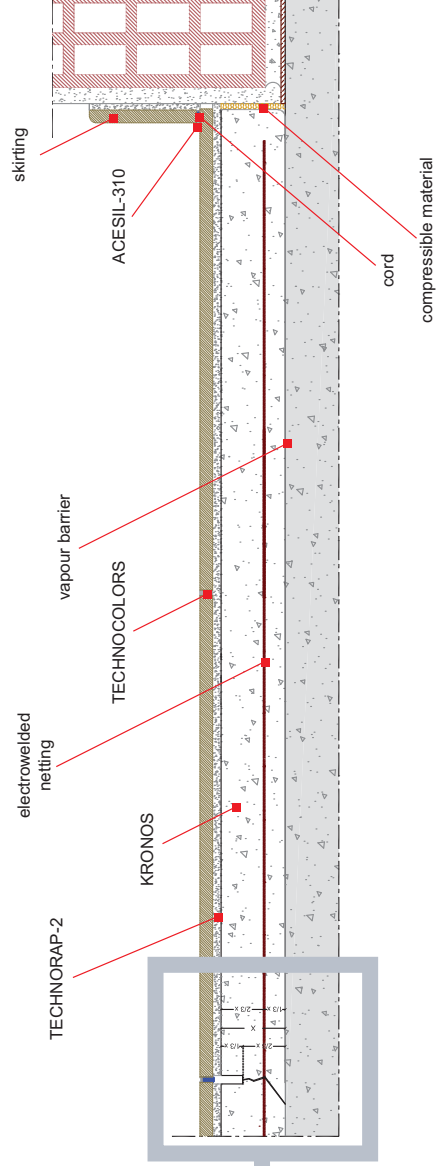
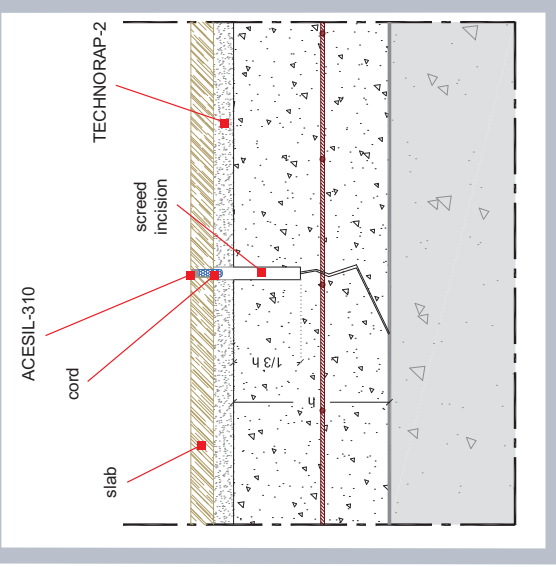


When fixing composite marble materials outdoors, always comply with the manufacturers instructions concerning the type and nature of the most suitable adhesive to use.
Check for any limitations prescribed by the manufacturer in relation to the residue humidity in the substrate.

R E C O M M E N D E D P R O D U C T

N O T E

Technokolla
system
design
systems



Technical Drawings