

Specification

- WATERPROOFING

Waterproofing layer applied to correctly cured substrates (screeds, plastered surfaces or plasterboard) made with an elastic membrane such as **RASOGUM** by Technokolla, certified as being suitable for waterproofing by **SÄUREFLIESNER-VEREINIGUNG E.V.**, applied in two coats with a flat trowel to obtain a final layer 3 mm thick and using adhesive **BANDELLA** strips of the **RL 80 S** type by Technokolla for sealing corners, edges and expansion joints.

For the expansion joints, use **NON-ADHESIVE BANDELLA** strips type **RL 120**. Amount required: 1.5 kg/m² for every mm of thickness

- INDOOR FLOORING

Indoor flooring made with ceramic tiles measuring up to 2000 cm² over a waterproofing layer made with **RASOGUM** cured for at least 2 days after application of the 2nd coat and fixed with one-pack cement-based adhesive such as **TECHNO-ONE** or **TECHNOMOS** (only for fixing vitreous mosaic) by Technokolla, conforming to European standard **EN 12004 C2TE**.

Joint measuring at least 2 mm, grouted with two-pack epoxy grouting, such as Technokolla's **SKYCOLORS**, which conforms to European standard **EN 13888 RG**. Joints sealed with Technokolla's **ACESIL-310**, with the addition of synthetic cord. To proceed in the correct way, it is advisable for the silicone sealant to be applied before grouting with cement-based products.

Amount of adhesive required: **TECHNO-ONE** 4 kg/m², **TECHNOMOS** 3 kg/m²
Amount of grouting required: 0.8 kg/m² (mosaic in the 2x2 cm format, 2 mm joints), 0.55 kg/m² (20x20 cm format, 4 mm joints)

- INDOOR WALL TILING

Indoor wall cladding with ceramic tiles measuring up to 2000 cm² over a waterproofing layer made with **RASOGUM** cured for at least 2 days after application of the 2nd coat and fixed with one-pack cement-based adhesive such as Technokolla's **TECHNO-ONE** or **TECHNOMOS** (only for fixing vitreous mosaic), which conform to European standard **EN 12004 C2TE**, WITH A JOINT OF AT LEAST 2 MM GROUTED WITH THREE-PACK EPOXY GROUTING SUCH AS **TECHNOKOLLA'S SKYCOLORS SHINE**, conforming to European standard **EN 13888 RG**. Joints sealed with Technokolla's **ACESIL-310**, with the addition of synthetic cord.

Amount of adhesive required: **TECHNO-ONE** 4 kg/m², **TECHNOMOS** 3 kg/m²

Amount of grouting required: 0.8 kg/m² (mosaic in the 2x2 cm format, 2 mm joints), 1.1 kg/m² (10x10 cm format, 4 mm joints)

- And we know how to solve them
- Corners and edges sealed with mould-inhibiting elastomeric sealants
 - Both floor and wall substrates waterproofed
 - Water repellent, low-modulus flexible grouting compounds with a low water absorption coefficient
 - Adhesives with a low imbibition value
 - The joints between the tiles must not be less than 2 mm

- We understand the problems
- Sudden variations in the temperature and humidity values
 - Split tiles
 - Mould
 - Water infiltrations
 - Detaching tiles
 - Stained grouting

Damp places

Damp places



www.layout.it

Technokolla S.p.A.
Via Radici in Piano, 558
41049 Sassuolo (MO) • Italy
Tel. +39 0536 862269
Fax +39 0536 862660

www.technokolla.com
marketing@technokolla.com



02 Damp places

TECHNO-ONE HD

1ST COAT RASOGUM

2ND COAT RASOGUM

ACESIL-310

SKYCOLORS SHINE

BANDELLA RL 80 S

SKYCOLORS

1ST COAT RASOGUM

2ND COAT RASOGUM

TECHNO-ONE HD



Rasogum

The new-generation waterproofing product which, along with the RL 80 S strip, becomes longer lasting. Characteristics: it's easy to apply. Two coats are required. This highly flexible product bonds strongly to all surfaces and its characteristics remain intact over time. **RASOGUM** has been certified by the SAURE-FLIESNER-VEREINIGUNG E.V. institute and by CSTB as a system for protecting against water for use under tiles.



Bandella
RL 80 S

Techno-One HD

The highly flexible one-pack adhesive which, in this system, can be used for formats measuring up to 1200 cm².

TECHNO-ONE HD has been certified as conforming to **EN 12004 C2TE** standards. When laying vitreous mosaic, it is advisable to use **TECHNOMOS** adhesive, which conforms to **EN 12004 C2TE** standards.



Skycolors

Formulated for joints 2 to 20 mm wide, **SKYCOLORS** is the epoxy grouting with a high chemical strength that's ideal for SPAS, beauty-farms and wellness centers. But it can also be used for swimming pools, private bathrooms, kitchen surfaces and, more generally, wherever the utmost hygiene is required. **The wide range of bright and shiny colours** makes the floors and walls even more attractive and harmonizes the entire room setting.

SKYCOLORS conforms to standard **EN 13888 CLASS RG**.



Acesil-310

The long-life silicone and elastomer-based sealant used for filling expansion joints. It is used with the cord, which should be positioned at the base of the joint before **ACESIL-310**.

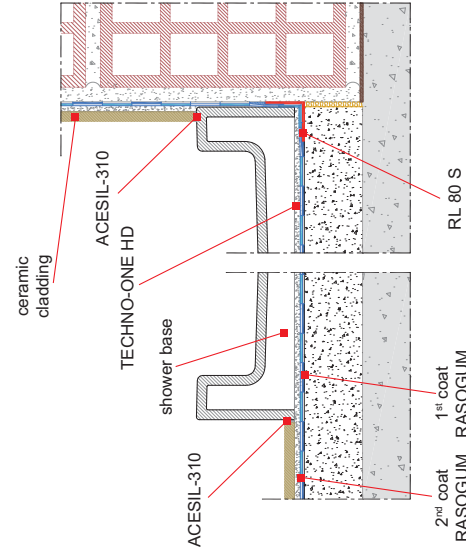


Skycolors Shine

SKYCOLORS SHINE is an extremely versatile grouting product that's perfect for sealing the joints in floors and walls made with different materials: mosaic of any kind, porcelain stoneware and split tiles. **SKYCOLORS SHINE** is suitable for places like spas, wellness centers, heated pools, swimming pools and bathrooms. **Thanks to its bright finish**, it is the ideal furnishing complement in places where a particularly attractive finish is required.

Conforms to standard **EN 13888 CLASS RG**.

Technokolla
system
design
systems



ACESIL-310

shower base

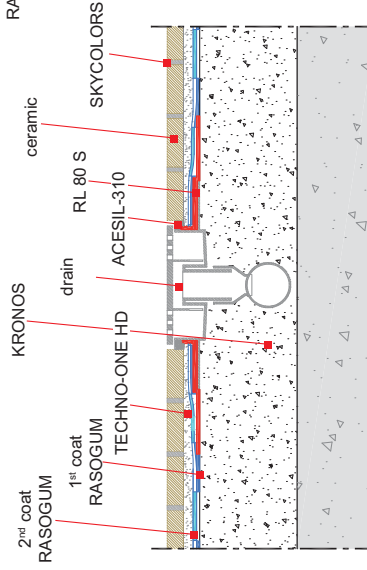
ceramic cladding

ACESIL-310

TECHNO-ONE HD

2ND coat RASOGUM

RL 80 S



2ND coat RASOGUM

1ST coat RASOGUM

KRONOS

drain

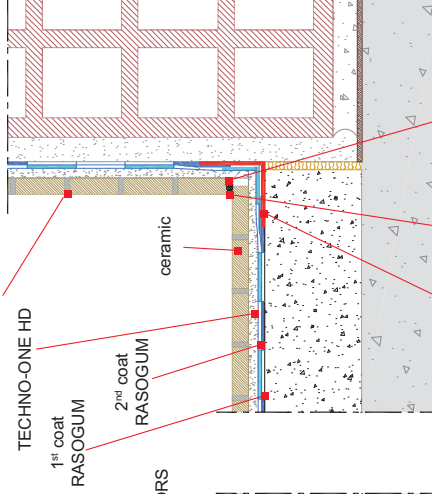
ACESIL-310

TECHNO-ONE HD

SKYCOLORS

ceramic

RL 80 S



SKYCOLORS SHINE

TECHNO-ONE HD

1ST coat RASOGUM

2ND coat RASOGUM

ceramic

cord
RL 80 S ACESIL-310

Technical
Drawings