

- Adhesives with a low imbibition value
- Quick-drying substrates
- coefficient
- Water repellence and low water absorption
- modern production criteria
- Pigment dispersion according to the most
- Flexible, low modulus grouting compounds
- Vast colour assortment

And we know how to solve them

- Excessively damp substrates
- Excessively absorbent adhesives
- Cracking
- Formation of mould
- day
- Joints that become too dirty as the floors are used day by
- Variations in the colour tones and blooming
- Excessively rigid grouting
- Colour matches with the tiles

We understand the problems

Cementitious grouting

Specification

- SCREED

Cement-based mortar screed at least 4 cm thick made of quickly evaporating, normally setting binder such as Technokolla's **KRONOS** and siliceous aggregates with 0 to 8 mm continuous grain size, reinforced with synthetic fibers and/or metal netting. Screed resistance must be 28-30 N/mm² after 28 days and allow ceramic tiles, marble and natural stones to be laid 24/-4 hours after casting.

Screed reinforcing with fiber such as Technokolla's **FS-18** and/or Ø 2 mm 5x5 cm mesh galvanized metal netting positioned at 1/3rd of the screed layer.

Dosage for 1 m³ of 0 to 8 mm aggregate:

250 kg **KRONOS**

150 l. water

1 kg **FS-18**

- FLOORING

Floor and skirting clad in body-coloured vitrified stoneware in up to 3600 cm² formats on a cement-based mortar screed, using highly flexible cement-based adhesive suitable for fixing vitrified stoneware, such as Technokolla's **TECHNO-ONE**, which conforms to European standard **EN 12004 C2TE**.

Floor and wall materials laid without gaps (closely laid tiles) must be grouted with a cement-based grouting compound of impalpable fineness such as **TECHNOSTUK G.F.** Floor and wall tiles with 4-5 mm joints grouted with low modulus cement-based grouting such as Technokolla's **TECHNOCOLORS** or **TECHNOSTUK 2-12** or **TECHNOSTUK G.G.**, conforming to European standard **EN 13888 CG2**, or **TOPSTUK**, which conforms to standards **EN 13888 CG2** and **EN12002 S1**.

The residue humidity in the substrate must not be more than 8% to prevent stains from forming in the grouting.

Joints sealed with Technokolla's **ACESIL-310** silicone sealant and synthetic cord after the substrate has been prepared with **PRIMERSIL** primer applied with a brush throughout the entire depth of the joint. To proceed in the correct way, it is advisable for the silicone sealant to be applied before grouting with cement-based products.

Amount of adhesive required:

4 kg/m²

Amount of grouting required:

0.35 kg/m² (30x30 cm format, 4 mm joints)

www.layout.it

Technokolla
system
design
systems

Cementitious grouting



TECHNOKOLLA >>

Technokolla S.p.A.
Via Radici in Piano, 558
41049 Sassuolo (MO) • Italy
Tel. +39 0536 862269
Fax +39 0536 862660

>> www.technokolla.com
marketing@technokolla.com



TECHNOKOLLA >>

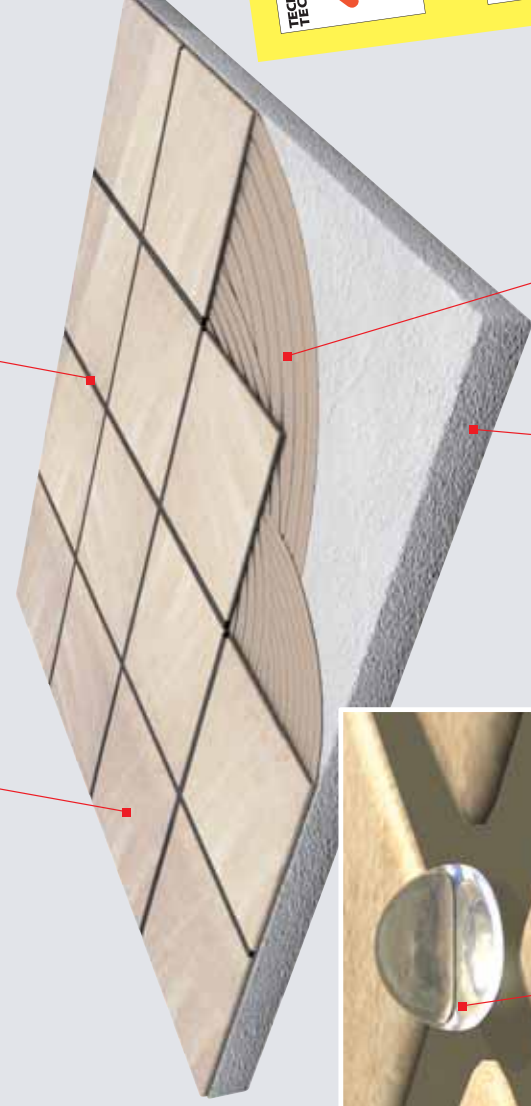
09

TECHNOKOLLA >>

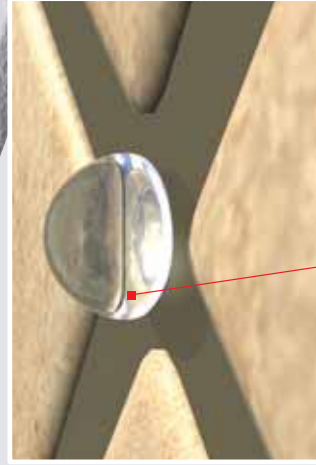
09 Cementitious grouting

TECHNOCOLORS
OR TECHNOSTUK
OR TOPSTUK

CERAMIC MATERIAL



TECHNO-ONE



KRONOS

WATER-REPELLENCE EFFECT



MICROSHIELD SYSTEM
The products bearing this trademark feature an active system that helps to prevent the development of bacteria, mould and mildew, ensuring the utmost hygiene and an efficient barrier effect.



WATER REPELLENT SYSTEM
Thanks to their special composition, the grouting compounds produced with this technology are water repellent, i.e. they are unable to absorb water.



COLOR SAVE SYSTEM
This special technology developed in the Technokolla laboratories ensures colorfast shades. Both bright and pastel tones will remain unchanged as the years go by.



Technostuk G.F.

Essential for **closely laid** tiles, its high water retention capacity allows it to seal very tight joints between even highly porous materials, such as twice-fired tiles, in the correct way.

Conforms to standard **EN 13888 CG2**.



Technocolors

Produced in **25 colours**, this is a revolutionary cement-based sealant for building purposes. A newly formulated highly water-repellent product, it features an extraordinarily **velvety finish** and an exceptional gloss.

Conforms to standard **EN 13888 CG2**.



Technostuk 2-12

With its 12 colours and **ability to cover very wide joints**, this is the ideal grouting product for floors where the finished appearance is a prime concern, such as polished vitrified stoneware.

Conforms to standard **EN 13888 CG2**.



Technostuk G.G.

Highly workable and with a good compressive strength, this is the ideal grouting product for **large industrial floors**. It is also ideal for **coito** and materials with textured surfaces.

Conforms to standard **EN 13888 CG2**.



Topstuk

Mould-proofing, water repellent grouting compound with an **ideally low modulus** for cladding that's highly stressed by temperature variations and the weather conditions.

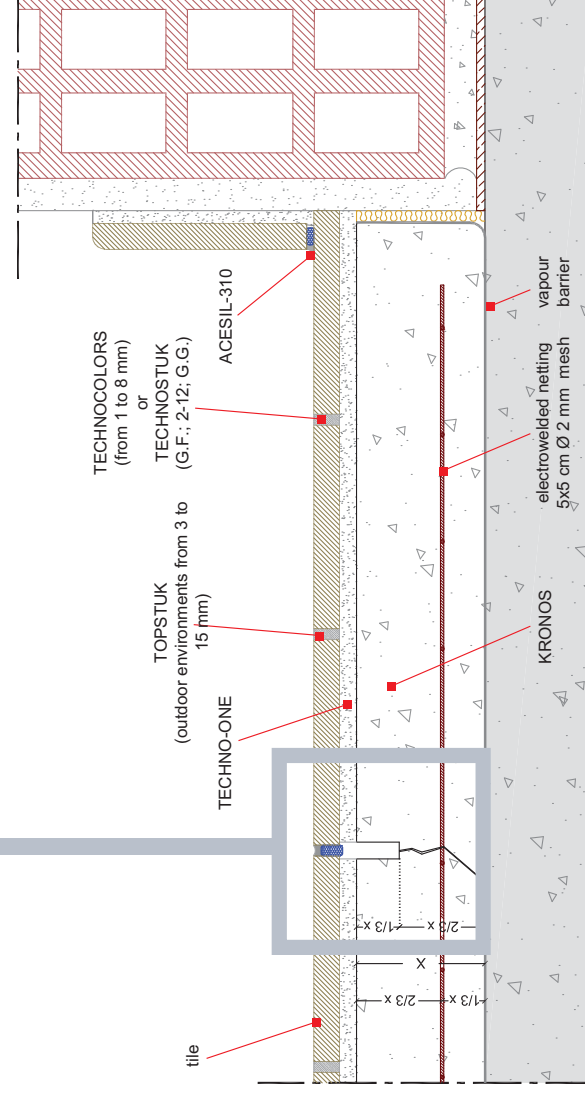
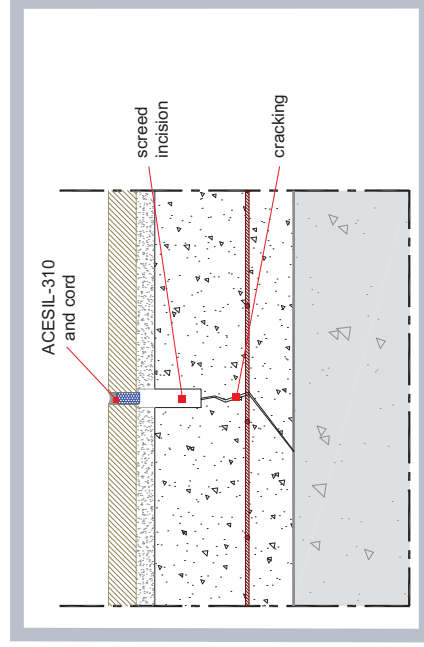
TOPSTUK conforms to European standards **EN 13888 CG2** and **EN 12002 S1**.



Tc-Stuk

A latex recommended for use with **TECHNOCOLORS** and **TECHNOSTUK** as it obtains grouting that's more resistant to abrasion, more elastic and with a greater ability to withstand staining.

RECOMMENDED PRODUCT



Technical Drawings

Technokolla
system
design
systems