

technostuk G.G.

02/17 128



TECHNOSTUK G.G.

Cement-based grouting for joints 4 to 20 mm in width. Microshield system provides active protection that helps to prevent the growth of bacteria, fungi and mould, which can cause stains and deterioration of the grouting. Highly sanitizing.

groutings and sealants





20±1%



3



5-35°C



2 h



4-20 mm



with Tc-Stuk



with Tc-Stuk

technostuk G.G.



MAIN FEATURES

- | | |
|-------------------------|--------------------|
| Water repellent | Mould-inhibiting |
| Optimum cleanability | Fungicide |
| High degree of hardness | Sanitizing |
| UV resistant | Bacteriostatic |
| Frost proof | Abrasion resistant |



APPEARANCE

Powder in 3 colours (see colour card at www.technokolla.com)

STORAGE

12 months in dry place

FIELDS OF USE

- Grouting joints between all types of ceramic tiles, both indoors and outdoors.
- Thanks to its special pigmentation and formula, TECHNOSTUK G.G. spreads in an optimum way and cleans off easily when dry, even from porous materials like cotto.

TECHNICAL SPECIFICATIONS OF THE PRODUCT

TECHNOSTUK G.G. mainly consists of high-strength cements, selected siliceous sands, synthetic resins and specific additives. MICROSHIELD SYSTEM provides active protection that helps to prevent the growth of bacteria, fungi and mould, which can cause stains and deterioration of the grouting.

Moreover, the new COLOR SAVE SYSTEM prevents the grouting from fading over time, ensuring a colorfast and extremely bright finish.

Lastly, thanks to WATER REPELLENT SYSTEM Technokolla's grouting range becomes water repellent and can therefore be used for swimming pools, tanks, etc., without being damaged by the water they contain.

For further details, ask the technical office for the safety brief or download it from the web site www.technokolla.com.

LABORATORY TESTS



RECOMMENDED ACCESSORIES



437209

Rubber trowel

The laboratory tests performed by Centro Ceramico of Bologna on Technokolla's cement-based grouting compounds with MICROSIELD SYSTEM active protection additive have established that: the bacterial survival rate is 0, while colonization by mould and fungi is inhibited.

Resistance to fungal growth test in accordance with standard: BS 5980

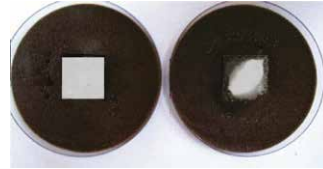


PHOTO 1

PHOTO 2

Photo 1 shows the sample of conventional grouting that has just been inoculated by colonies of mould spores.

Photo 2 shows the same sample after 14 days of incubation, with mould growth index 4 (31-70%).

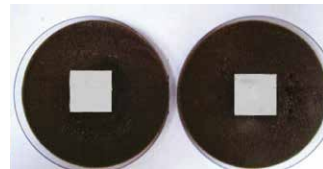


PHOTO 3

PHOTO 4

In **Photo 3**, the sample of Technokolla's grouting with the addition of Microshield system active protection additive has just been inoculated by colonies of mould spores.

Photo 4 shows the same sample after 14 days of incubation where no mould appears to have grown, thus corresponding to mould growth index 0 (no visible growth).

HOW TO PREPARE THE MIXTURE

Blend TECHNOSTUK G.G. with about 5 l. of clean water per 25 kg bag (20±1%) until mixture is creamy. It is of vital importance for the paste be lump-free and perfectly uniform in colour. Use perfectly clean tools and a low speed blender (approx. 500 rpm) when preparing the mixture.

Small quantities of TECHNOSTUK G.G. can also be mixed by hand but bear in mind that varying amounts of water between one batch and the next can result in joints that are slightly different in colour. Use TC-STUK instead of the water to blend the mixture if the flooring is subjected to intensive traffic, on elastic surfaces or when applying to façades.

GROUTING OPERATION

Apply TECHNOSTUK G.G. with the special rubber trowel, and make sure that the joints are filled completely. Wipe off any excess material with the edge of the applicator. Once the grouting begins to harden, the surface can be wiped clean with a clean, damp sponge. Any traces left on the tiles can be removed easily the next day using a soft, dry cloth. If TC-STUK is used instead of the water, this operation must be done immediately after the surfaces have been cleaned with a sponge. Warning: only use water for blending TECHNOSTUK G.G. when grouting porous materials, such as Tuscan cotto tiles! A whitish layer, that mainly consists of calcium carbonate and is commonly called bloom, sometimes forms on the surface of grouting made with cement-based materials. Bloom is caused by many factors that may interact with each other as the grouting dries. The water used for the mixture is one of these, and becomes a harmful factor if too much is used or when various mixtures are prepared with different amounts of water. The drying time also affects the colour shade considerably, as it is influenced by the temperature and humidity of the air, and the residual humidity in the materials used for fixing, such as adhesives, or substrates that are not yet fully dried. Our advice is: dose the water used for the mixture in compliance with the instructions on the pack; avoid making lots of different mixtures; never stop grouting a room halfway and then continue the day after; always wait until the substrate and adhesive have completely dried before grouting.

AVAILABLE COLOURS

01 MANHATTAN

03 ASH

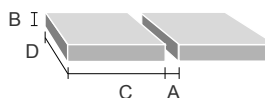
28 BEIGE MIX

| TILE in cm | GROUTING consumption g/m ² | | | | | | |
|---------------|---------------------------------------|------|------|------|------|------|------|
| | JOINT in mm | | | | | | |
| | 4 | 5 | 6 | 8 | 10 | 15 | 20 |
| 10x10x0.6 | 820 | 1020 | 1200 | 1650 | 2000 | | |
| 15x15x0.9 | 820 | 1000 | 1200 | 1650 | 2000 | 3100 | 4100 |
| 20x20x0.9 | 610 | 770 | 910 | 1200 | 1550 | 2300 | 3100 |
| 12x24x0.9 | 770 | 950 | 1150 | 1500 | 1900 | 2900 | 3900 |
| 12x24x1.4 | 1200 | 1500 | 1800 | 2400 | 3000 | 4500 | 6000 |
| 20x20x1.4 | 950 | 1200 | 1400 | 1900 | 2400 | 3600 | 4800 |
| 20x30x0.9 | 510 | 650 | 770 | 1000 | 1280 | 1900 | 2550 |
| 30x30x1 | 450 | 570 | 680 | 900 | 1150 | 1700 | 2300 |
| 30x30x1.4 | 630 | 800 | 950 | 1300 | 1600 | 2400 | 3200 |
| 30x60x1 | 340 | 430 | 510 | 680 | 850 | 1300 | 1700 |
| 40x40x1 | 340 | 430 | 510 | 680 | 850 | 1300 | 1700 |
| 50x50x1 | 270 | 340 | 410 | 550 | 680 | 1020 | 1350 |
| 60x120x1.1 | 190 | 250 | 280 | 370 | 470 | 700 | 950 |

CONSUMPTION CALCULATION FORMULA

$$A \times B \times \left[\frac{C+D}{C \times D} \right] \times 170 = \frac{g}{m^2}$$

in mm in cm



WARNINGS AND RECOMMENDATIONS

- do not exceed the recommended amount of water in the mixture. The mixture must never be fluid
- first perform a cleanability test when using dark colours on light polished porcelain stoneware or on natural stone
- if the tiles are very absorbent, it is advisable to wet the surface before grouting
- never interrupt the grouting operations for more than two hours in the same room or area
- do not add anything to the product that is not specified in this data sheet
- it is advisable to blend the mixture with TC-STUK instead of water for grouting swimming pools or heated floors

technostuk G.G.

| TECHNICAL DATA | VALUE | REQUIREMENT | STANDARD |
|---|--------------------------|-------------------------|--------------------------------|
| Appearance | granular powder | | |
| Temperature during application | min. +5°C, max +35°C | | |
| Water used for mixing | 5 l. - 25 kg bag (20±1%) | | |
| Curing time | 3 min | | |
| Pot life | *2 h | | |
| Thermal resistance | from -30 °C to +80°C | | |
| Abrasion resistance | ≤ 1000 mm ³ | ≤ 1000 mm ³ | EN 12808-2 |
| Flexural strength after dry storage | 7.5 N/mm ² | ≥ 2.5 N/mm ² | EN 12808-3 |
| Bending strength after freezing/thawing cycles | 3.0 N/mm ² | ≥ 2.5 N/mm ² | EN 12808-3 |
| Compressive strength after dry storage | 35.0 N/mm ² | ≥ 15 N/mm ² | EN 12808-3 |
| Compressive strength after freezing/thawing cycles | 30.0 N/mm ² | ≥ 15 N/mm ² | EN 12808-3 |
| Shrinkage | 1.7 mm/m | ≤ 3 mm/m | EN 12808-4 |
| Water absorption after 30 min. | 0.5 g | ≤ 2 g | EN 12808-5 |
| Water absorption after 240 min. | 1.0 g | ≤ 5 g | EN 12808-5 |
| Resistance to the growth of bacteria S% (survival): | 0% | | protocol CCB (RP 335/10/S CCB) |
| Degree of mould colonization C% (growth): | no visible growth | | BS 5980 (RP 332/10/S CCB) |

TIME TO WAIT BEFORE GROUTING

| | |
|--------------------------------------|----------------|
| Floor with adhesive | *24 h |
| Floor with quick-setting adhesive | *4-6 h |
| Floor with dry-shake finish (mortar) | *8-10 days |
| Wall with adhesive | *5-6 h |
| Wall with quick setting adhesive | *2 h |
| Ready for use | * after 7 days |
| Treadable | * after 24 h |

* these times refer to a temperature of 23°C-50% R.H.. They are shorter at higher temperatures and longer at lower temperatures.

SPECIFICATION

Ceramic floor and wall tiles must be grouted using cement-based powder grouting compound with Microshield system additive, which helps to prevent the growth of bacteria, fungi and mould, such as Technokolla's TECHNOSTUK G.G., used for grouting joints up to 20 mm.

Technokolla reminds you to examine the "notes" document that completes the information in this data sheet. The document can be downloaded in the pdf format from the website www.technokolla.com.

The advice about technical matters in the technical data sheets, or given verbally or in writing by our personnel as part of our customer assistance service, is the result of our best and most up to date experience. Since we are unable to personally modify the conditions in the building site or the way the work is carried out, this information is purely indicative and, thus, binds us neither legally nor in any other way in relation third parties. This information does not relieve the end user from being responsible for testing our products so as to make sure they are fit for the required use. We therefore strongly advise the customer/user to subject Technokolla's products to preventive tests in order to ensure that they are suitable. The end user is also responsible for checking to make sure that this technical data sheet is not obsolete and that more recent editions have not replaced it. Thus, before using our products, you are advised to download the most up to date version of the technical data sheet from our web site www.technokolla.com.



Sika Italia S.p.A.

Registered Office and Administrative Headquarters: Via L. Einaudi 6,
20068 Peschiera Borromeo (MI)

Sassuolo Plant (MO): Via Radici in Piano 558, Postal Code 41049

Tel: +39 0536 809711 Fax: +39 0536 809729 www.technokolla.com