

technomax S1

12/11 223



TECHNOMAX S1

Medium-fast setting full-bed flexible fluid adhesive applied in a single coat for fixing large ceramic floor tiles. Ideal for over-tiling and use on heating screeds.

Excellent as a skimming coat in layers up to 15 mm thick.

**bonding agents
and adhesives**

TECHNOKOLLA®





25±1%



5-30°C



30 min



10-15 mm



60 min



6 mm



technomax S1



MAIN FEATURES

- Fluid adhesive
- Semi-rapid
- For laying large formats
- One-coat application
- Longer open time

APPEARANCE

- Grey powder

STORAGE

- 12 months in a dry place

FIELDS OF USE

- Fixing ceramic tiles of all types, even in large formats, on both indoor and outdoor floors
- Fixing natural stone and marble, so long as they are not affected by water.
- Over-tiling on old ceramic tiles without the use of primer.
- Fixing thin porcelain stoneware slabs.
- Laying cladding materials on electrically or water-heated screeds.
- Suitable for use when a high performance is required, such as: tile laying in industrial environments or renovated places with the UPEC P4 and P4S classification.
- Horizontal levelling that can be covered after 24-72 h. Layers up to 15 mm thick.

SUBSTRATES

Cement-based screeds, anhydrite screeds¹, concrete, aerated concrete, old ceramic floors, RASOLASTIK lines, RASOGUM, old linoleum floors², PVC² or vinyl², plasterboard and parquet floors².

¹ After application of Primer-T.

² After application of Primer-101.

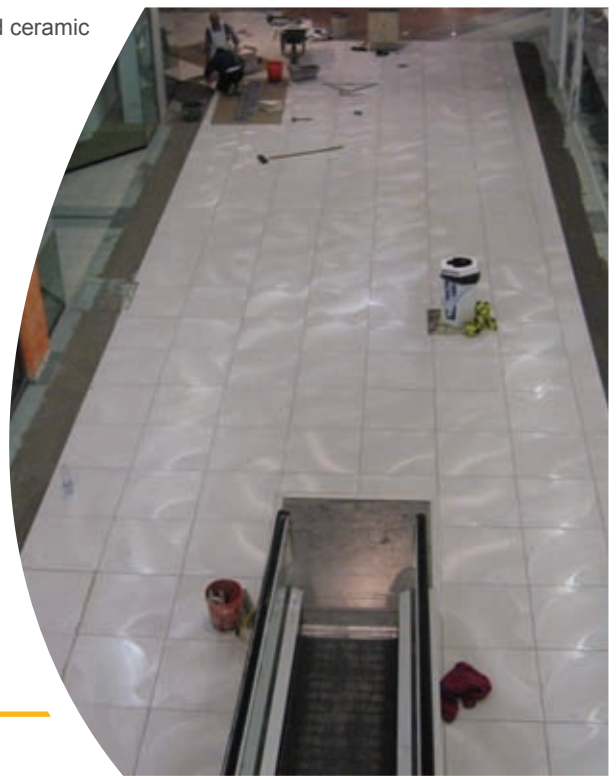
NATURE OF THE PRODUCT

TECHNOMAX S1 mainly consists of high-strength cements, selected silicon/quartz mineral charges and specific additives. Ask our technical department for the safety brief containing further information or download the document from our website www.technokolla.com.

OPERATIONS PRIOR TO APPLICATION

If the surface must be levelled, TECHNOMAX S1 can be used in layers up to 15 mm thick. The product can be spread with a straight stick during the levelling phase. The surfaces must be levelled at least 24-72 h prior to fixing, depending on the thickness obtained. Use RASORAPID skimming plaster for layers more than 15 mm thick.

bonding agents and adhesives



RECOMMENDED ACCESSORIES



TKW 407
Mixer 1200



TKW 411
TKW 412



TKW 462
White rubber mallet



TKW 121
10x10 mm trowel



TKW 181
Ø15 mm round trowel

HOW TO PREPARE THE MIXTURE

TECHNOMAX S1 should be blended with about 6.5 l of clean water per bag (25±1%) until a homogeneous, lump-free mixture is obtained. It is advisable to use a drill at low speed (approx. 500 rpm) as a very high speed will reduce the mechanical characteristics of the product. Wait about 5 minutes, then stir the mixture briefly again and start laying the tiles. The product obtained is a creamy, fluid paste that can be easily applied with a trowel and possesses an optimum thixotropy. The tiles need not be spread twice with this adhesive, even when large tile formats are used.

To get the most out of this characteristic, the substrate must be perfectly flat. Once the tile has been placed on the bed of adhesive, it should be pressed down with the sole movement of the hand.

WARNINGS AND RECOMMENDATIONS

Do not apply to:

- metal
- old tiles outdoors

Do not apply:

- to vertical surfaces
- at temperatures lower than 5°C or more than 30°C
- in coats more than 6 mm thick.

AMOUNT REQUIRED

Trowel	10x10 mm	Ø15 mm
Technomax S1	5,5 Kg/m ²	7 Kg/m ²

The amounts refer to the sole use of a trowel and on flat substrates.

technomax S1

TECHNICAL DATA	VALUE	REQUIREMENT	STANDARD
Curing time	5 min		
Pot life	*60 min		
Open time	*30 min	°30 min	EN 1346
Adjustability time	*Approx. 40 min		
Treadable	*After 12-24 h		
Floor tiles can be grouted	*After 12-24 h		
Surface can be used	*After 72 h		
Initial tensile bond	2,5 N/mm ²	°≥ 1 N/mm ²	EN 1348
Tensile bond after the action of heat	2,3 N/mm ²	°≥ 1 N/mm ²	EN 1348
Tensile bond after immersion in water	1,5 N/mm ²	°≥ 1 N/mm ²	EN 1348
Bond after freezing/thawing cycles	1,4 N/mm ²	°≥ 1 N/mm ²	EN 1348
Transversal warping	3mm	≥ 2,5 mm	EN12002
Compressive strength	22 N/mm ²		EN 196

° according to standard "EN 12004"

* these times refer to a temperature of 23°C-50% R.H.. They are shorter at higher temperatures and longer at lower temperatures.

SPECIFICATION

Ceramic floor tiles must be fixed with a class "C2E full-bed cement-based powder adhesive according to standard EN 12004 and class S1 according to standard EN 12002", such as TECHNOKOLLA's TECHNOMAX S1 type.

Technokolla strongly advises you to examine the "**product info**" document that completes and is an integral part of the contents of this data sheet. The document can be downloaded in the pdf format from our web site www.technokolla.com.

The technical-application suggestions in the technical data sheets, or provided either verbally or in writing by our personnel for customer assistance purposes, are the result of our current state-of-the-art and experience. Since we are unable to influence the building site conditions or actual work in any way, these suggestions are not binding and we are liable neither legally nor in any other way in relation third parties for the use made of this information. Thus, the information does not relieve the end user from his responsibility for testing our products so as to make sure they are fit for the required use. We therefore strongly advise the customer/user to conduct all the appropriate tests prior to using Technokolla products in order to make sure that they are suitable for the purpose. The end user is also obliged to make sure that this technical data sheet is still valid and that it has not been substituted by a more recent edition. Thus, before using our products, we advise you to download the most recent version of the relative technical data sheet from our web site www.technokolla.com.