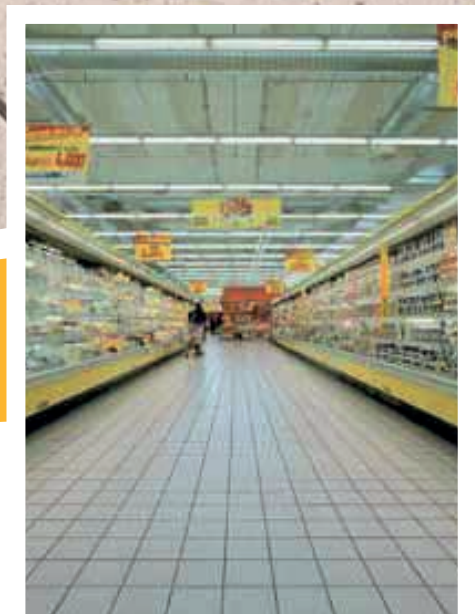


techno-one+

02/11 117

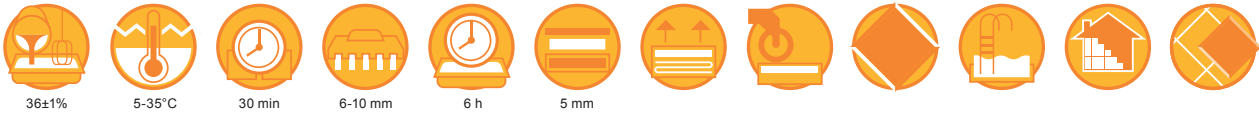


TECHNO-ONE+

High-efficiency and deformability powder adhesive for fixing ceramic tiles. Suitable for refined porcelain stoneware and over-fixing. Highly workable.

bonding agents and adhesives





36±1%

5-35°C

30 min

6-10 mm

6 h

5 mm

techno-one+



MAIN FEATURES

- High efficiency
- One-pack adhesive
- Optimum workability
- Frost proof
- No creep
- Longer open time

ASPECT

Grey powder

STORAGE

12 months in a dry place

FIELDS OF USE

- Fixing absorbent floor and wall tiles outdoors and indoors, also of large format.
- Suitable for laying of tiles requiring high performances, such as: industrial floorings, swimming-pools and façades.
- Laying cladding materials on electrically or water-heated screeds.
- Over-tiling on old ceramic tiles without the use of primer.
- Fixing thin porcelain stoneware slabs.
- Fixing natural stone and marble, so long as they are not affected by water.
- Spot-gluing insulating panels made of polystyrene, polyurethane foam, rock or glass wool.

SURFACES

Cement plasters, cement lime mortars, gypsum-based plasters¹, anhydrite screeds¹, concrete, aerated concrete, old ceramic floors, old PVC floors², old vinyl floors², plasterboard, RASOLASTIK range, RASOGUM.

¹ after application of PRIMER-T

² after application of PRIMER-101

NATURE OF THE PRODUCT

TECHNO-ONE+ mainly consists of high-strength cements, selected silicon/quartz mineral charges and specific additives.

Ask our technical department for the safety brief for further information or download it from our web-site www.technokolla.com.

OPERATIONS PRIOR TO FIXING

Small localized hollows or gravel pockets in the case of concrete can be levelled (no more than 3 mm thick) with TECHNO-ONE+ 24 h prior to fixing. If thicker layers are required, use RASO or GAP-R respectively 24 h and 6 h before fixing the tiles.

bonding agents and adhesives



RECOMMENDED ACCESSORIES



TKW 407
Blender 1200



TKW 411
TKW 412



TKW 462
Rubber mallet



TKW 111
Trowel 8x8 mm



TKW 121
Trowel 10x10 mm

HOW TO PREPARE THE MIXTURE

Grey TECHNO-ONE+ must be mixed with about 9 l of clean water ($36 \pm 1\%$).

Blend until a homogeneous, lump-free mixture is obtained. It is advisable to use a drill at low speed (approx. 500 rpm) as a high speed will reduce the mechanical characteristics of the product.

Wait 5-10 minutes, then stir the product briefly again and start fixing the tiles.

The product obtained is a creamy paste that can be easily applied with a trowel and that possesses at optimum thixotropy.

WARNINGS AND RECOMMENDATIONS

It is always advisable to apply a double coat when laying tile formats measuring 900 cm² and over.

Do not apply straight on to:

- metal
- old ceramic tiles in exterior

Do not apply:

- at temperatures less than 5°C or more than 35°C
- in layers more than 5 mm thick

AMOUNT REQUIRED

Trowel	6x6 mm	8x8 mm	10x10 mm
Techno-one+	2,4 Kg/m ²	3,4 Kg/m ²	4,2 Kg/m ²

Amount requireds se référant seulement à l'emploi de la spatule et à des surfaces plats.

techno-one+

TECHNICAL SPECIFICATIONS	VALUE	REQUISITE	STANDARD
Curing time	10 min		
Pot life	*6 h		
Open time	*30 min	°30 min	EN 1346
Adjustability time	*Approx. 50 min		
Can be subjected to traffic	*After 24-36 h		
Floor tiles can be grouted	*After 24-36 h		
Wall tiles can be grouted	*After 4-6 h		
Surface can be used	*After 14 days (21 days tanks and swimming pools)		
Creep on a vertical wall	0 mm	°≤ 0,5 mm	EN 1308
Initial tensile bond	1,8 N/mm ²	°≥ 1 N/mm ²	EN 1348
Tensile bond after the action of heat	1,7 N/mm ²	°≥ 1 N/mm ²	EN 1348
Tensile bond after immersion in water	1,3 N/mm ²	°≥ 1 N/mm ²	EN 1348
Bond after freezing/thawing cycles	1,4 N/mm ²	°≥ 1 N/mm ²	EN 1348
Compressive strength	12 N/mm ²		EN 196

° according to standard EN 12004

* these times refer to a temperature of 23°C – 50% R.H.

They become shorter with higher temperatures and longer at lower temperatures.

SPECIFICATION

Ceramic floor and wall tiles must be fixed with a class “C2TE cementitious powder adhesive according to standard EN 12004”, such as the TECHNOONE+ type by TECHNOKOLLA, which can be applied in layers up to 5 mm thick on cementitious substrates.

Technokolla reminds you to examine the “**notes**” document that completes the information in this data sheet. The document can be downloaded in the pdf format.

The advice about technical matters and applications in the technical data sheets, or given verbally or in writing by our personnel as part of our customer assistance service, are the result of our best and most up to date experience. Since we are unable to personally modify the conditions in the building site or the way the work is carried out, this information is purely indicative and, thus, binds us neither legally nor in any other way in relation to third parties. This information does not relieve the end user from being responsible for testing our products so as to make sure they are fit for the required use. We therefore strongly advise the customer/user to subject Technokolla's products to preventive tests in order to ensure that they are suitable. The end user is also responsible for checking to make sure that this technical data sheet is not obsolete and that more recent editions have not replaced it. Thus, before using our products, you are advised to download the most up to date version of the technical data sheet from our web site www.technokolla.com.