

kalox-plus

10/12 218



KALOX-PLUS

Highly bonding white or grey finishing plaster for indoor and outdoor walls.
Float finish.

refurbishing and finishing

TECHNOKOLLA





Blender



23±1% grey
24±1% white



5-35°C



Smooth



4h



6 mm

kalox-plus



MAIN FEATURES

Monocomponent

“Fine setting coat” finish

Can also be applied to old plastic cladding

Layers up to 6 mm thick

Low water absorption

High bonding capacity

APPEARANCE

White or grey powder

STORAGE

12 months in dry place

FIELDS OF USE

KALOX-PLUS can be used as leveling mortar with float finish for both indoor and outdoor walls. It can be painted or coated afterwards.

KALOX-PLUS can also be tiled.

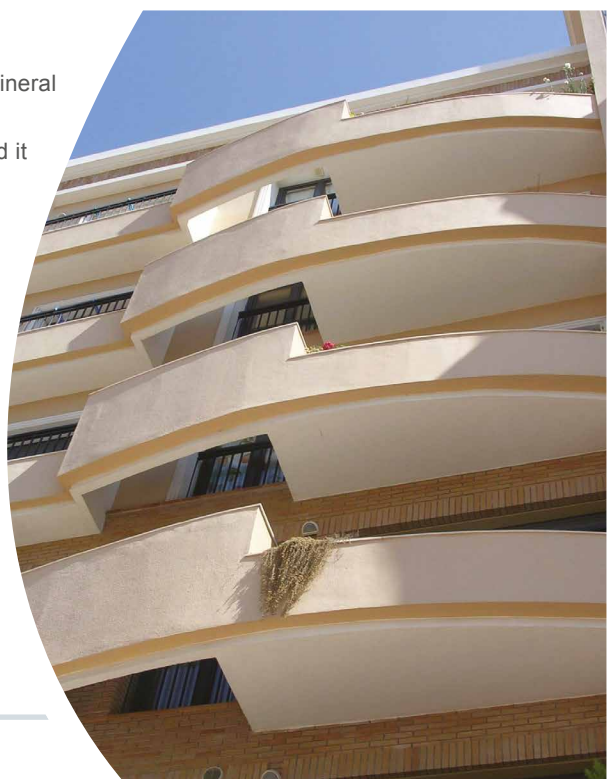
SUBSTRATES

Concrete, cement-based plaster, old plastic wall cladding, plasterboard, walls with residues of cement-based adhesives, old glass mosaic or ceramic tiles.

NATURE OF THE PRODUCT

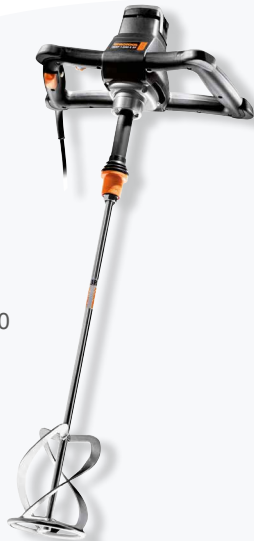
KALOX-PLUS consists of lime and cement, selected silicon/quartz mineral charges, organic copolymers and specific additives.

For further details, ask the technical office for the safety brief or download it from the web site www.technokolla.com.



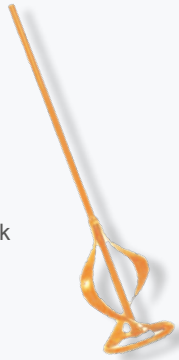
refurbishing and finishing

RECOMMENDED ACCESSORIES



437145

Blender 1200



437180

Swivel stick



437187

28x12 cm smooth trowel

HOW TO PREPARE THE MIXTURE

Blend KALOX-PLUS with approximately 6 l. of clean water per 25 kg bag (24±1% white, 23±1% grey) until mixture is homogeneous and lump-free. Use blender at low speed (approx. 500 rpm).

APPLICATION

The surface must be free from dust and dirt. Traces of oil, grease, wax, etc., must be removed beforehand.

Apply the product with a smooth steel trowel. Press the mortar well down onto the substrate to ensure a perfect bond. However, remember that on sunny days or if the substrate is very absorbent, this latter must be wetted with plenty of water to prevent product from drying out and failing to adhere well.

Apply two coats. Wait approximately 1 hour before applying the second coat. Each coat should be not more than 6 mm thick. Wait a short while and when surface is dry to the touch, finish off with a sponge trowel, dampening with water until surface is smooth, uniform and free from joints or ridges.

Bury K-NET fiberglass net in the first coat if layers thicker than 4 mm are required or if the substrate is not homogeneous.

WARNINGS AND RECOMMENDATIONS

- do not apply to gypsum substrates, e.g.: gypsum-based plasters, blocks of plaster covered brick (use KALOX-G)
- do not use on substrates subject to rising damp
- do not apply in layers more than 6 mm thick
- do not add anything to the product that is not specified in this data sheet
- do not apply at temperatures lower than 5°C or higher than 35°C

CONSUMPTION

approx. 1.3 kg/m² per mm of thickness

kalox-plus

TECHNICAL DATA	VALUE	STANDARD
Appearance of finished product	white or grey powder	
Maximum diameter of aggregate	0.6 mm	
Apparent specific mass of powder (grey)	approx. 1350 kg/m ³	
Apparent specific mass of powder (white)	approx. 1300 kg/m ³	
Water required for mixing (grey)	23±1%	
Water required for mixing (white)	24±1%	
Apparent specific mass of fresh mortar (grey)	approx. 1750 kg/m ³	EN 1015-6
Apparent specific mass of fresh mortar (white)	approx. 1700 kg/m ³	EN 1015-6
Pot life	*approx. 4 h	
FINAL PERFORMANCE		
Compressive strength after 28 days	≥15 N/mm ²	EN 1015-11
Bond to concrete after 28 days	≥1 N/mm ² type B	EN 1015-12
APPLICATION SPECIFICATIONS		
Consumption	approx. 1.3 kg/m ² per mm of thickness	
Minimum thickness allowed	≥1 mm	
Total maximum thickness	6 mm	
Storage	12 months in unopened pack in dry place	
Temperature during application	min.+5°C, max.+35°C	

* these time intervals refer to a temperature of 23°C-50% R.H.. They become shorter with higher temperatures and longer at lower temperatures.

SPECIFICATION

Vertical substrates must be finished with lime and cement-based product to be blended with water alone, such as TECHNOKOLLA's KALOX-PLUS, which can be applied in layers up to 6 mm thick.

Technokolla reminds you to examine the “**notes**” document that completes the information in this data sheet. The document can be downloaded in the pdf format from the website www.technokolla.com.

The advice about technical matters in the technical data sheets, or given verbally or in writing by our personnel as part of our customer assistance service, is the result of our best and most up to date experience. Since we are unable to personally modify the conditions in the building site or the way the work is carried out, this information is purely indicative and, thus, binds us neither legally nor in any other way in relation third parties. This information does not relieve the end user from being responsible for testing our products so as to make sure they are fit for the required use. We therefore strongly advise the customer/user to subject Technokolla's products to preventive tests in order to ensure that they are suitable. The end user is also responsible for checking to make sure that this technical data sheet is not obsolete and that more recent editions have not replaced it. Thus, before using our products, you are advised to download the most up to date version of the technical data sheet from our web site www.technokolla.com.



Sika Italia S.p.A.

Registered Office and Administrative Headquarters: Via L. Einaudi 6,
20068 Peschiera Borromeo (MI)

Sassuolo Plant (MO): Via Radici in Piano 558, Postal Code 41049

Tel: +39 0536 809711 Fax: +39 0536 809729 www.technokolla.com