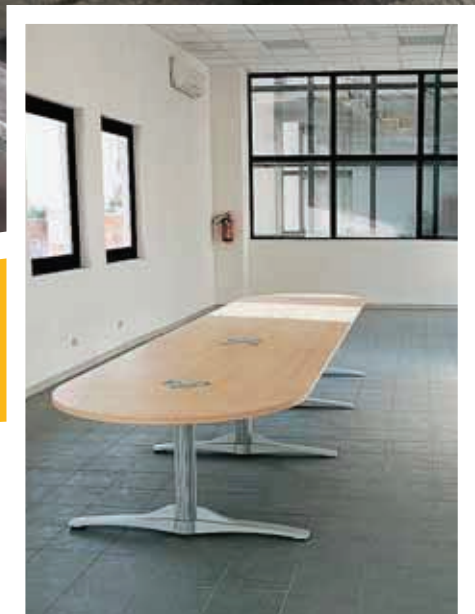


# aires

04/11 207



The 15 kg bag yields as much as a 25 kg bag of conventional adhesive



## AIRES

Very high efficiency (+55%), highly flexible cement-based adhesive with sound-deadening properties, for fixing ceramic tiles.

## bonding agents and adhesives





42±1%



5-35°C



30 min



6-8 mm



6 h



4 mm



# aires



EN 12004



EN 12004



EN 12002



## MAIN FEATURES

- Very high efficiency
- One-pack product
- Highly flexible
- Exceptional workability
- Frost proof
- No creep
- Reduces the noise produced by footsteps
- Longer open time

## APPEARANCE

Grey powder

## STORAGE

12 months in a dry place

## FIELDS OF USE

- Fixing ceramic tiles of all types, even in large formats, on both indoor and outdoor walls and floors.
- Suitable for fixing thin porcelain stoneware slabs.
- Over-tiling on old ceramic tiles without the use of primer.
- Laying cladding materials on electrically or water-heated screeds.
- Suitable for use where the noise produced by footsteps must be reduced (hospitals, libraries and public places in general).
- Fixing on facades.
- Fixing materials on electrically- or water-heated screeds.

## SUBSTRATES

Cement-based plaster, cement-lime mortar, gypsum-based plaster<sup>1</sup>, anhydrite screeds<sup>1</sup>, cement-based screeds, concrete, aerated concrete, old ceramic floors, old linoleum floors<sup>2</sup>, PVC<sup>2</sup> or vinyl<sup>2</sup>, plasterboard, RASOLASTIK, RASOGUM lines.

<sup>1</sup> after application of PRIMER-T

<sup>2</sup> after application of PRIMER-101

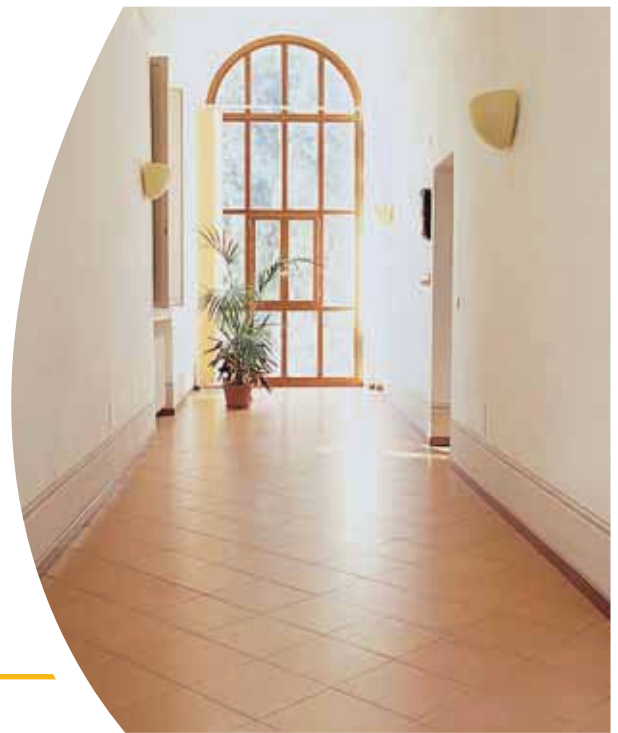
## NATURE OF THE PRODUCT

AIRES mainly consists of high-strength cements, selected mineral charges and specific additives. Ask our technical department for the safety brief containing further information or download it from our website [www.technokolla.com](http://www.technokolla.com).

## OPERATIONS PRIOR TO APPLICATION

Small localized hollows or gravel pockets in the case of concrete can be levelled (no more than 3 mm thick) with AIRES 36-48 h prior to application. If thicker layers are required, use RASO or RASORAPID respectively 24 h and 6 h before fixing the tiles.

## bonding agents and adhesives



## RECOMMENDED ACCESSORIES



**TKW 407**  
Mixer 1200



**TKW 411**  
**TKW 412**



**TKW 462**  
White rubber mallet



**TKW 111**  
Trowel 8x8 mm

### HOW TO PREPARE THE MIXTURE

AIRES must be blended with about 6.3 l of clean water.

Blend until a homogeneous, lump-free mixture is obtained.

It is advisable to use a stirrer at low speed (approx. 500 rpm) as a high speed will reduce the mechanical characteristics of the product. Wait 5-10 minutes, then stir the product briefly again before applying.

The product obtained is a creamy paste that can be easily applied with a trowel and possesses an optimum thixotropy.

### WARNINGS AND RECOMMENDATIONS

It is always advisable to apply a double coat when laying tile formats measuring 900 cm<sup>2</sup> and over.

**Do not apply to:**

- metal
- old tiles outdoors

**Do not apply:**

- at temperatures lower than 5°C or higher than 35°C
- in coats more than 4 mm thick
- in industrial environments.
- in swimming pools

AMOUNT REQUIRED		
Trowel	6x6 mm	8x8 mm
Aires	1,5 Kg/m <sup>2</sup>	2 Kg/m <sup>2</sup>

The amounts refer to sole use of the trowel and to flat substrates.

TECHNICAL SPECIFICATIONS	VALUE	REQUISITE	STANDARD
Curing time	10 min		
Pot life	*6 h		
Open time	*30 min	°30 min	EN 1346
Adjustability time	*Approx. 50 min		
Can be walked over after	*24-36 h		
Floor tiles can be grouted after	*24-36 h		
Wall tiles can be grouted after	*6-8 h		
Surface can be used after	*14 days		
Creep on vertical wall	0 mm	°≤ 0,5 mm	EN 1308
Initial tensile bond	1,8 N/mm <sup>2</sup>	°≥ 1 N/mm <sup>2</sup>	EN 1348
Tensile bond after the action of heat	1,8 N/mm <sup>2</sup>	°≥ 1 N/mm <sup>2</sup>	EN 1348
Tensile bond after immersion in water	1,1 N/mm <sup>2</sup>	°≥ 1 N/mm <sup>2</sup>	EN 1348
Bond after freezing/thawing cycles	1,1 N/mm <sup>2</sup>	°≥ 1 N/mm <sup>2</sup>	EN 1348
Transversal warping	> 5 mm	≥ 5 mm	EN 12002
Compressive strength	10 N/mm <sup>2</sup>		EN 196

° According to standard "EN 12004".

\* These times refer to a temperature of 23°C-50% R.H.. They are shorter at higher temperatures and longer at lower temperatures.

## SPECIFICATION

Ceramic floor and wall tiles must be fixed with a class "C2TE cement-based powder adhesive according to standard EN 12004 and S2 in accordance with EN12002", such as the AIRES type by TECHNOKOLLA, which is able to reduce the noise produced by footsteps and can be applied in layers up to 4 mm thick on cement-based substrates.

**Technokolla** reminds you to examine the **"notes" document** that completes the information in this data sheet. The document can be downloaded in the pdf format from our web site [www.technokolla.com](http://www.technokolla.com).

The advice about technical matters and applications in the technical data sheets, or given verbally or in writing by our personnel as part of our customer assistance service, are the result of our best and most up to date experience. Since we are unable to personally modify the conditions in the building site or the way the work is carried out, this information is purely indicative and, thus, binds us neither legally nor in any other way in relation to third parties. This information does not relieve the end user from being responsible for testing our products so as to make sure they are fit for the required use. We therefore strongly advise the customer/user to subject Technokolla's products to preventive tests in order to ensure that they are suitable. The end user is also responsible for checking to make sure that this technical data sheet is not obsolete and that more recent editions have not replaced it. Thus, before using our products, you are advised to download the most up to date version of the technical data sheet from our web site [www.technokolla.com](http://www.technokolla.com).